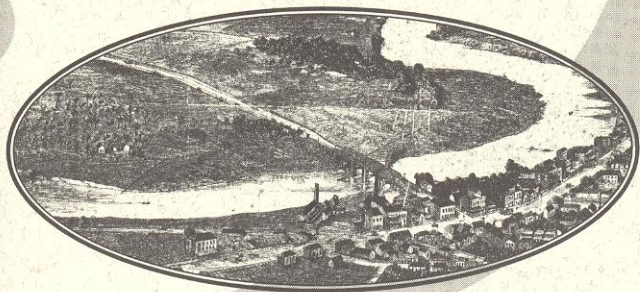


# Maitland

HERITAGE · WALKS · SERIES

## Lorn Heritage Walk

1823



*From a lithograph of Maitland ~ 1878*

Situated on a bend of the Hunter River, the area now known as Lorn, possessed many of the characteristics that made the Hunter Valley ideal for the hunter-gatherer lifestyle of the Australian Aborigines. Within this wider environment the Lorn site has its place as part of the territory of the Worimi, Awabakal and Wonarua peoples.

Lorn today is a suburb of Maitland, separated from the main town by the Hunter River and high levee banks. Lorn is essentially residential in character. The domestic architecture of the suburb ranges from late Victorian brick or weatherboard villas to brick Federation and rendered Bungalow style cottages. The houses are complemented by fine stands of street trees, mature gardens with large specimen trees and a variety of fencing treatments which contribute to Lorn's classification as a Garden Suburb.

Lorn is important as an example of a private township (until 1907) in which the founder and his families' homes existed within the township boundaries.

*Lorn*  
*Number six in the series*