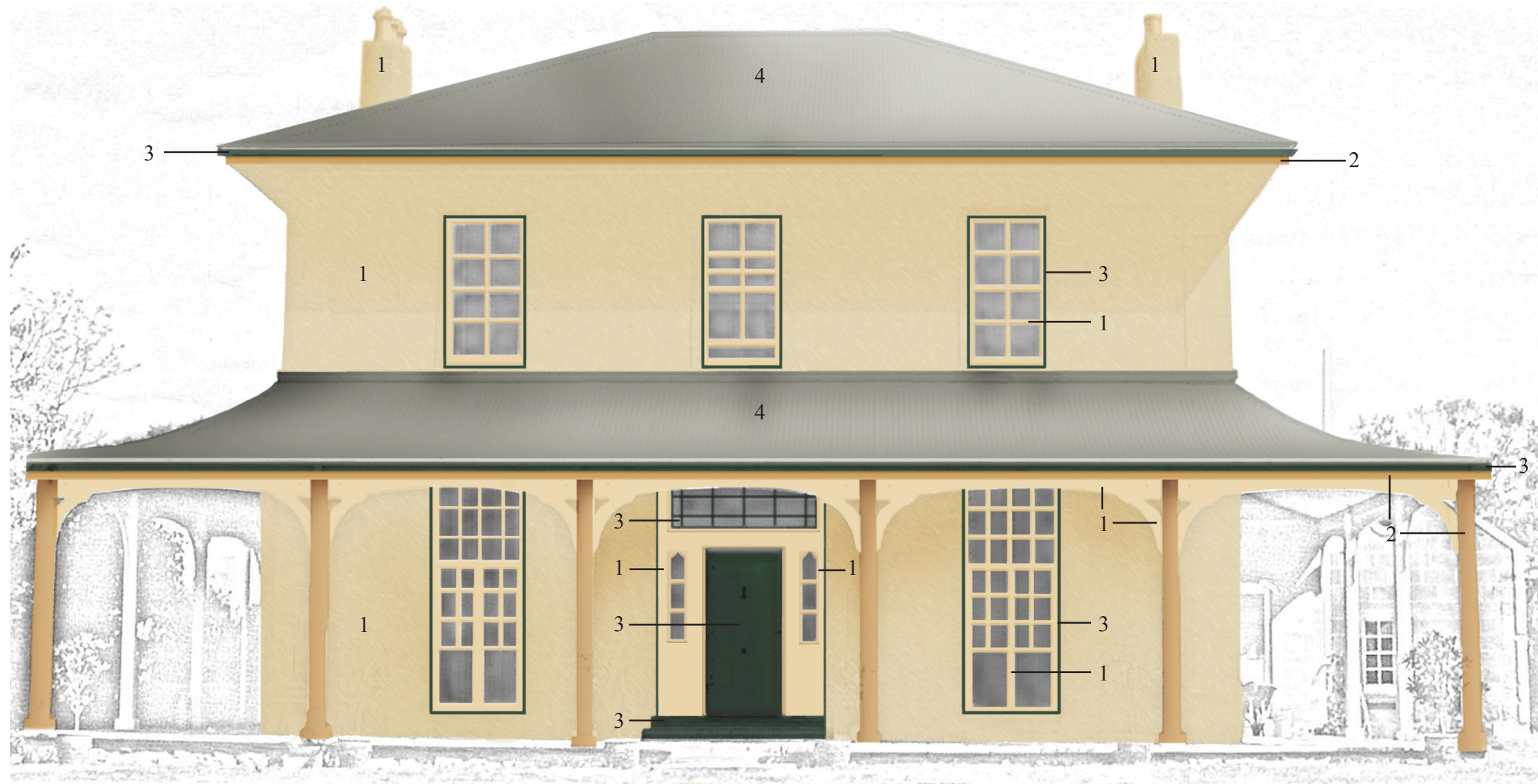


COLOUR SCHEME GUIDE 1830-1960

Colonial 1830-1850



1
Manilla Y45

Walls *
Window sashes
Window grilles
Verandah post braces
Verandah upper rail
Chimneys
Front door sidelights

2
Deep Stone Y55

Fascia
Verndah posts & post bases

3
Zucchini G67

Window jambs
Window frames
Front door panel
Front door transom
Front door sash
Front steps
Gutters
Shutters *

4
Neutral Grey N23

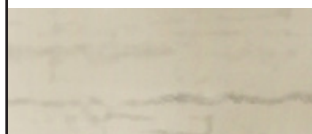
Roofs *

Notes:

- * All colour selections based on Australian Standards Colour Samples Chart AS2700 - 2011
- * Walls of this period were sometimes limewashed in colours ranging from off white to light beige or beige pink.
- * Shutters were usually of a darker colour, typically the same as for doors and window frames.

COLOUR SCHEME GUIDE 1830-1960

Early Victorian 1850-1860



1
Natural Stone

Walls *
Chimney
Verandah
Base walls
Floors *



2
Brown X54

Eaves
Fascia



3
Deep Indian Red R64

Doors
Windows
Shutters *



4
Manilla Y45

Columns
Gutters
Downpipes



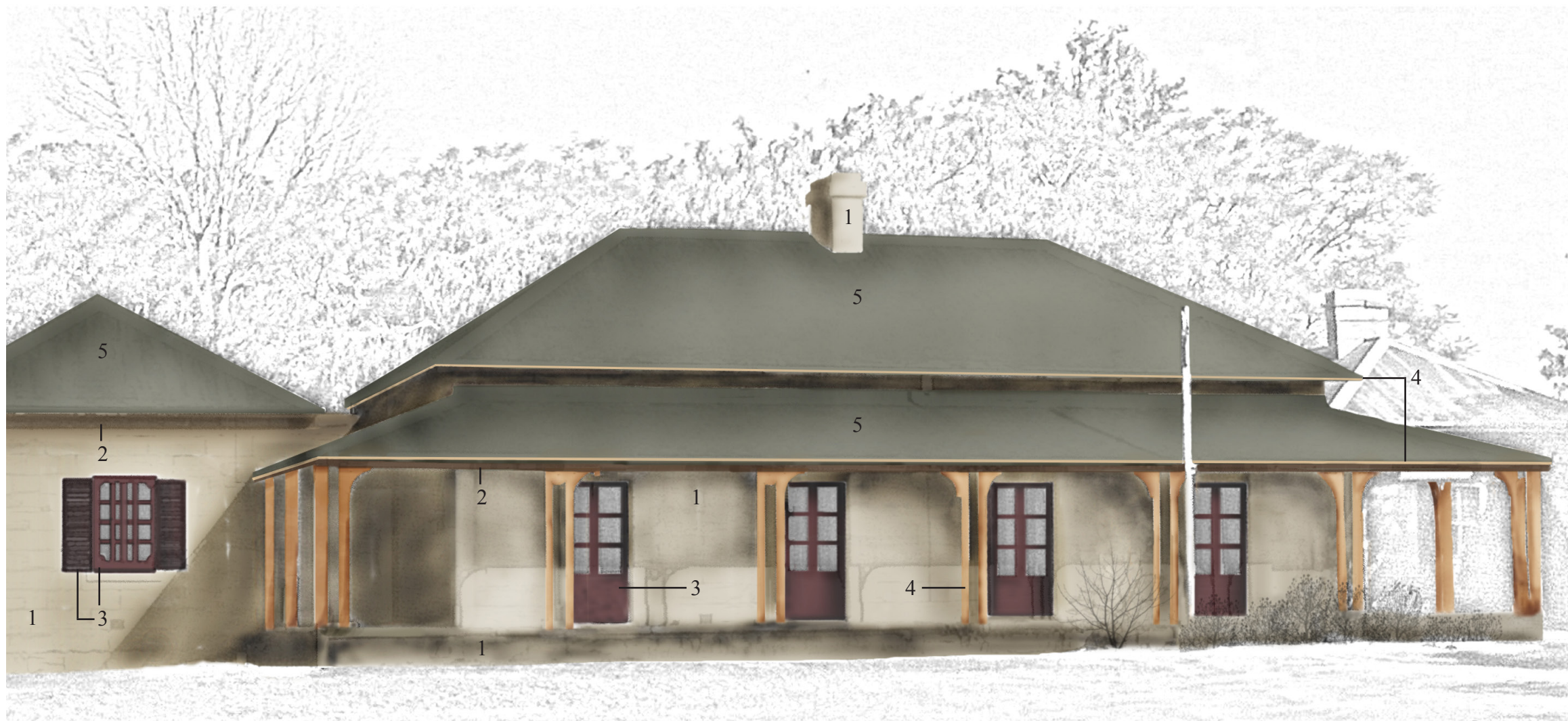
5
Slate G64

Roof



6
Opaline G32

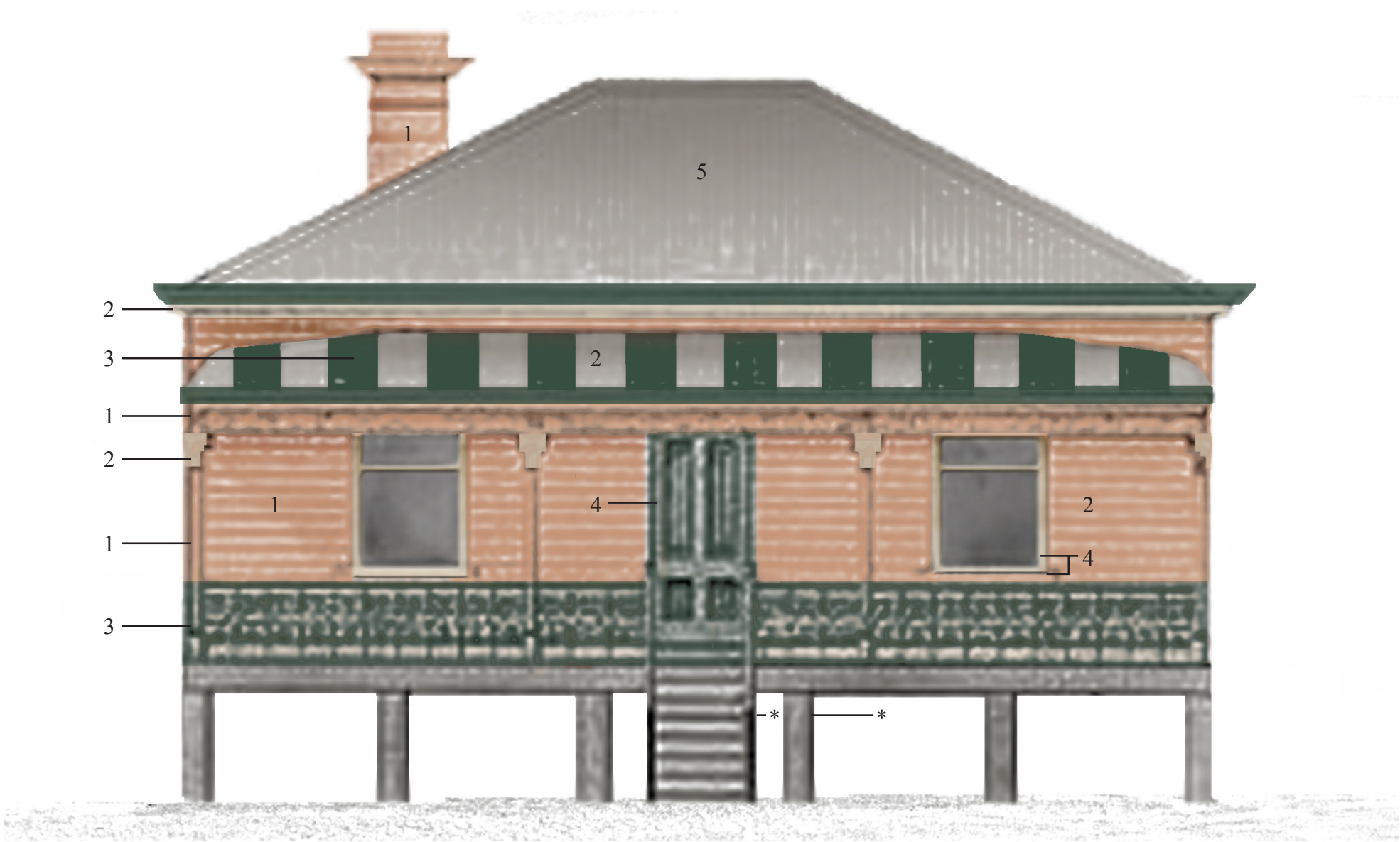
Verandah ceiling *



Notes:

- * All colour selections based on Australian Standards Colour Samples Chart AS2700 - 2011
- * Cement rendered walls became common during this period. They were marked out in rectangular blocks to simulate the form of stone wall construction known as ashlar. Walls were often limewashed in colours that ranged from light beige to biscuit or pink beige and occasionally in strong colours such as terracotta or deep buff.
- * Floor slabs of brickwork and stone typically remain unpainted.
- * Shutters painted the same colour as window frames.
- * Painting of the verandah ceiling in opaline green or eau-de-nil was a common practice that continued until about 1910.

COLOUR SCHEME GUIDE 1830-1960
Mid Victorian 1860-1880



1
Salmon Pink R42

Walls
Verandah posts
Verandah beams
Fascia
Chimney

2
Ghost Gum R33

Verndah post braces
Window frames
Eaves

3
Zucchini G67

Verandah roof stripe
Iron balustrade
Gutters
Front door
Window sashews
Window sills

5
Neutral Grey N23

Roof

Notes:
* All colour selections based on Australian Standards Colour Samples Chart AS2700 - 2011
* Steps, verandah slab and foundations typically unpainted.

COLOUR SCHEME GUIDE 1830-1960

High Victorian 1880-1890

1

Dark Blue Grey B53

Gutters
Chimney moulding
Door frames
Window frames

2

Mist Blue B33

Bay window walls
Frieze
Fascia
Window sashes
Door sashes

3

Light Blue Grey B44

Verandah hood stripe
Highlights in columns
capitals & frieze



4

Biscuit X42

Door frames
Door transoms

5

Beige X43

Walls
Frieze
Chimney

6

Charcoal B64

Balustrade
Posts
Verandah frieze

7

Birch Grey N35

Roof
Verandah hood stripe

Notes:

- * All colour selections based on Australian Standards Colour Samples Chart AS2700 - 2011
- * Leadlight was frequently found in the upper portion of the front door.

COLOUR SCHEME GUIDE 1830-1960

LateVictorian 1890-1900



1
Magnolia X32

Window hood trim
Window frames
Window sashes
Front door mouldings



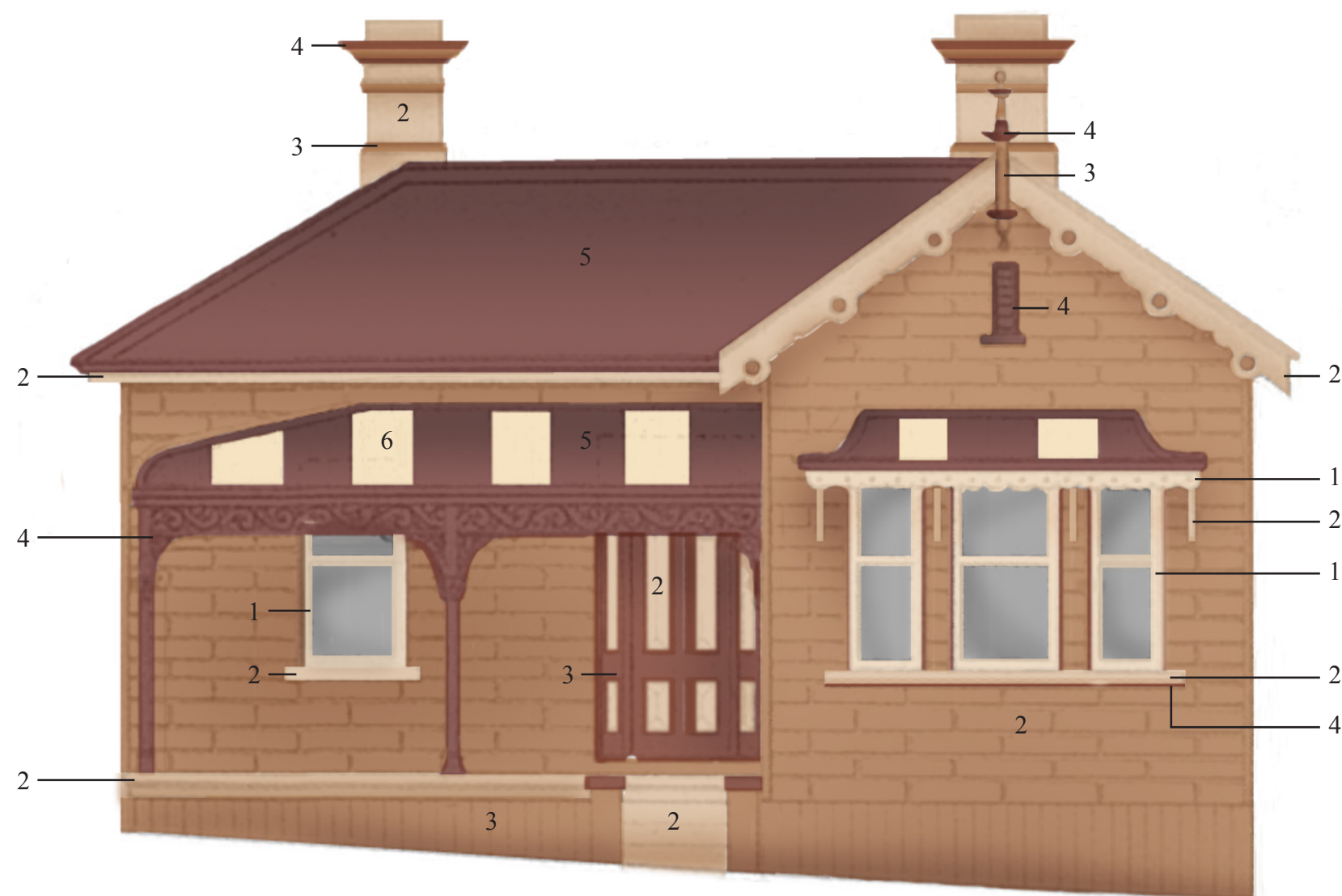
2
Biscuit X42

Fascia
Chimney
Gable barge boards
Window hood mouldings
Window sill
Front door panels



3
Coffee X52

Chimney moulding
Gable finial
Brickwork



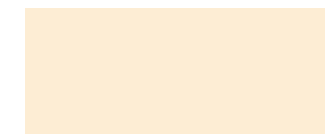
4
Venetian Red R62

Chimney mouldings
Gable finial
Window sill moulding
Front door frame
Posts
Frieze



5
Deep Indian Red R64

Roof
Verandah hood stripe
Window hood stripe
Gutter



6
Cream Y34

Verndah hood stripe
Window hood stripe

Notes:

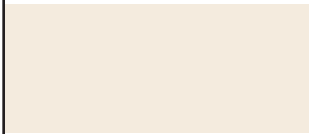
* All colour selections based on Australian Standards Colour Samples Chart AS2700 - 2011

COLOUR SCHEME GUIDE 1830-1960
Federation 1900-1910



1
Lichen G55

Chimney bases
Gable



2
Off White Y35

Window sashes
Door sashes and panels
Fascia
Gable panels
Post supports



3
Ti Tree G65

Base walls
Stairs
Slab edges



4
Banksia G53

Gable
Gable barge boards
Window frames
Window sills
Front door frame &
sidelight
Posts



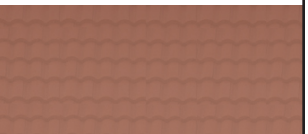
5
Zucchini G67

Ridge capping & finials
Gable moulding



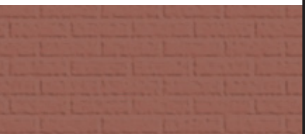
6
Eucalyptus G52

Gutters



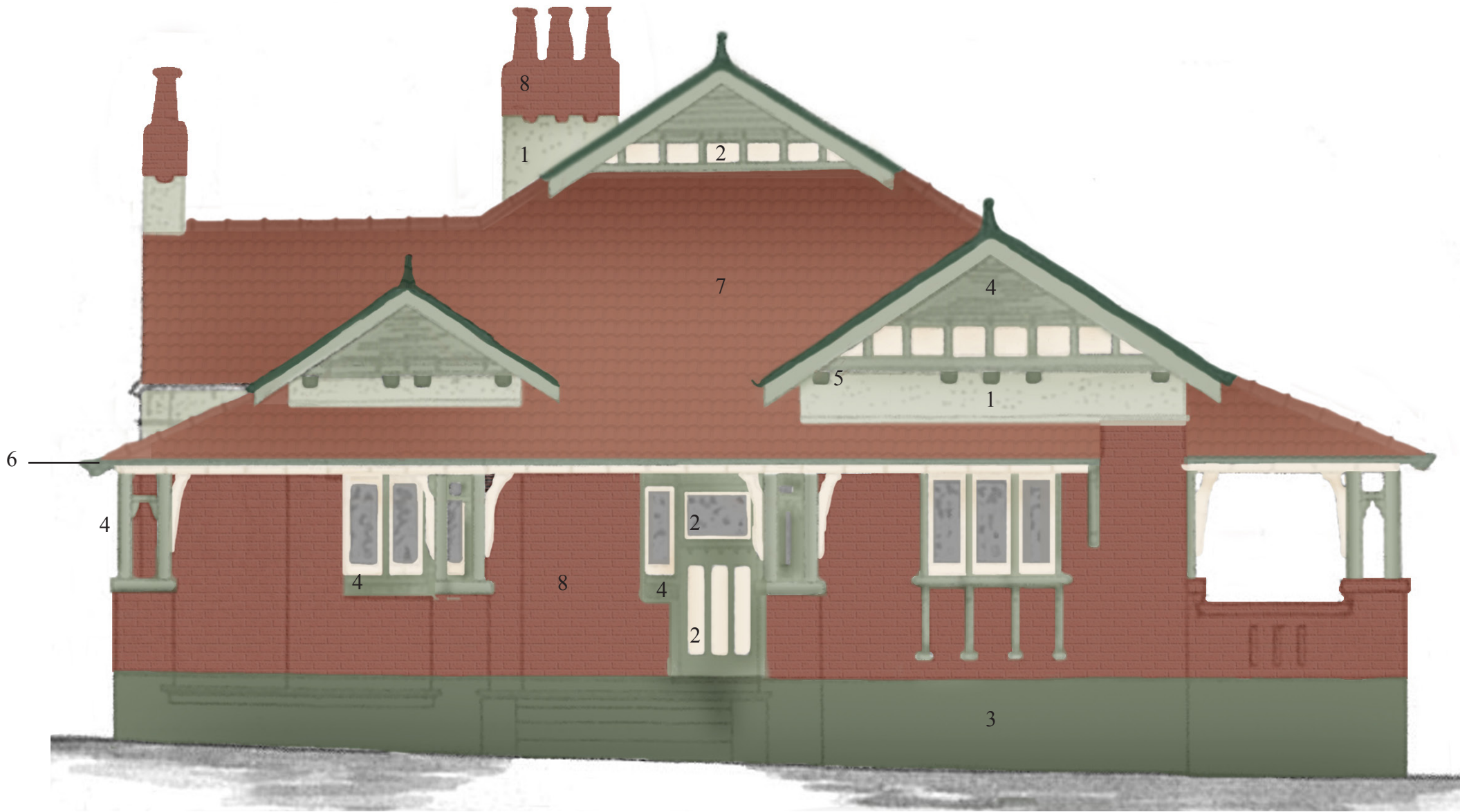
7
Terracotta Tiles

Roof



8
Red Face Brick

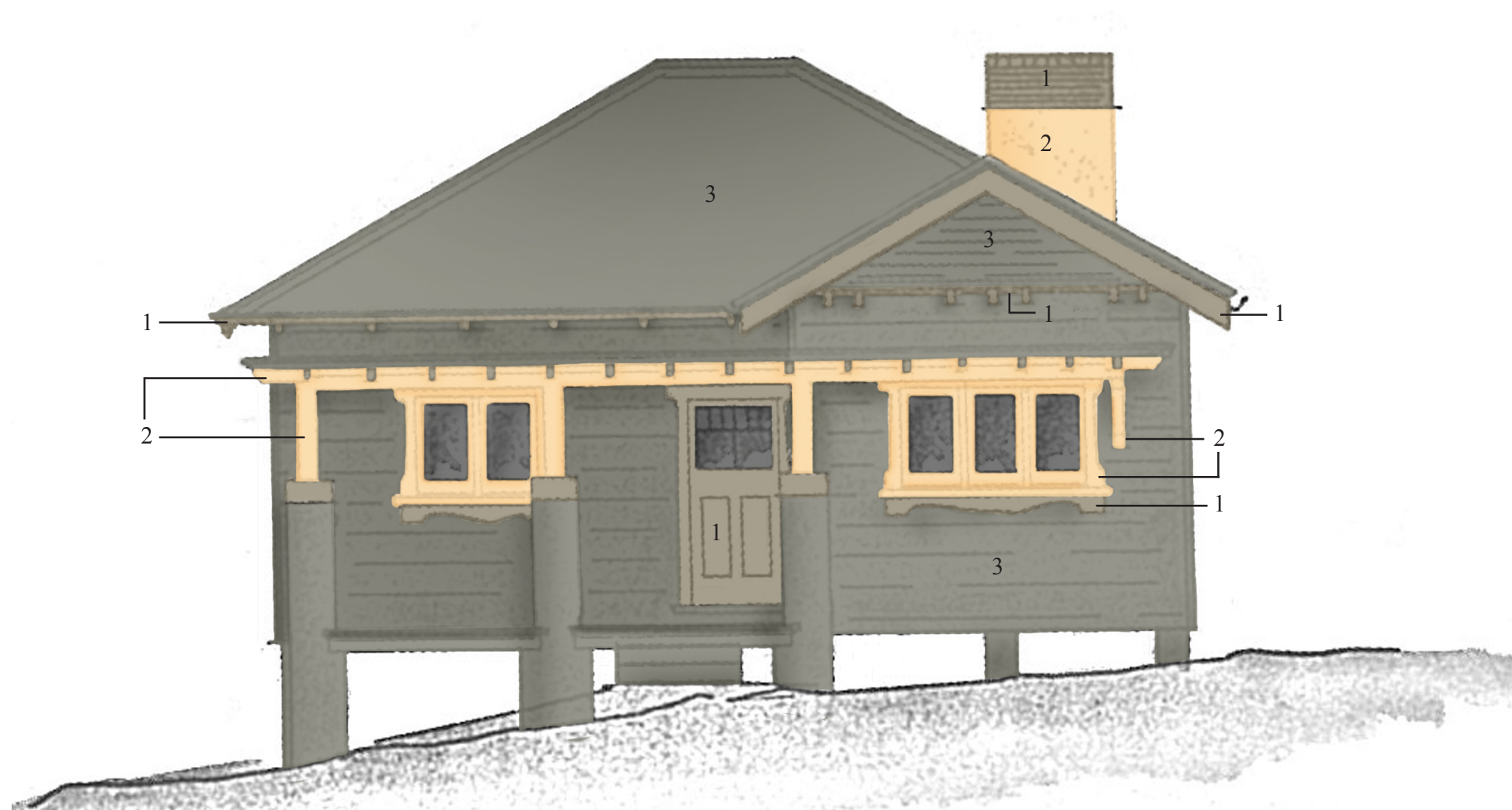
Walls



Notes:
* All colour selections based on Australian Standards Colour Samples Chart AS2700 - 2011

COLOUR SCHEME GUIDE 1830-1960

Inter War 1920-1940



1
Green Grey N32

Eaves
Gable barge board
Gable mouldings
Doors
Chimney top
Window apron

2
Sand Y44

Windows
Verandah Frame

3
Mid Grey N52

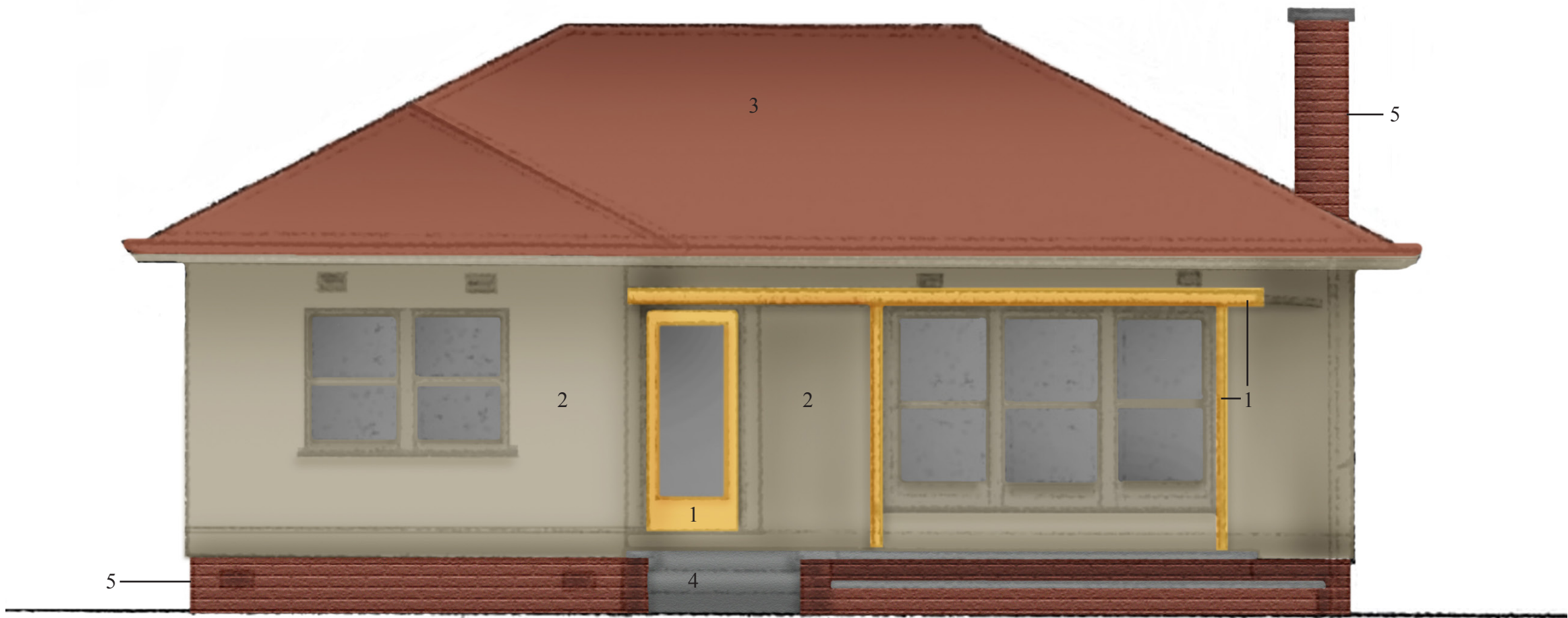
Roof
Walls
Gutter

Notes:

* All colour selections based on Australian Standards Colour Samples Chart AS2700 - 2011

COLOUR SCHEME GUIDE 1830-1960

Post War 1940-1960



1
Inca Gold Y16

Door
Pergola



2
Oyster N41

Walls
Window Frames
Gutters



3
Red Oxide R63

Roof



4
Concrete

Verandah floor
Front Stairs



5
Face Brick

Chimney
Base walls

Notes:
* All colour selections based on Australian Standards Colour Samples Chart AS2700 - 2011