[illegible]



Window Schedule				
Type Mark	Mark	Height	Width	Comments
W01	W01	1500	750	AWNING
W02	W02	1500	750	AWNING (FROSTED)
W03	W03	2200	1200	AWNING
W04	W04	1500	1200	FIXED
W05	W05	1500	1200	AWNING
W06	W06	750	2000	SLIDING
W07	W07	850	600	FROSTED DOUBLE HUNG (FOR VENTILATION)

NOTES:

- ALL DOORS AND GATE HARDWARE TO COMPLY WITH AS1428.1-2009
- LIFT OFF HINGES TO ALL INTERNAL DOORS
- ALL GLAZING TO BE GLAZED IN CONJUNCTION WITH SECTION 5 REPORT PREPARED BY BUILDING SUSTAINABILITY SOLUTIONS
- ALL GLAZED DOORS ARE TO HAVE VISUAL INDICATORS TO COMPLY WITH AS1428.1-2009
- ALL TACTILE GROUND INDICATORS (TGSIS) TO COMPLY WITH AS1428.1-2009 AND TO BE STAINLESS STEEL (TYP. INTERNAL AND EXTERNAL)

1 : 100



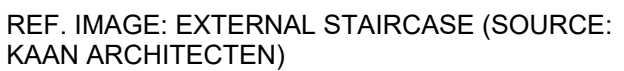
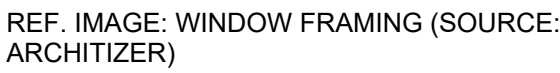
1 : 100



1 : 100



1 : 100



HOOVERGROUP
DESIGN & DEVELOPMENT



**BUILDING DESIGNERS
ASSOCIATION OF AUSTRALIA**



**ACCREDITED
BUILDING DESIGNER**

THIS DRAWING & DESIGN THEREON ARE
COPYRIGHT AND MUST NOT BE COPIED,
REPRODUCED OR CONSTRUCTED
WITHOUT THE WRITTEN APPROVAL OF
THE HOOVER GROUP

Sheet Issue Date: 11.04.2025

[illegible]

RPL GROUP

PROPOSED CHILDCARE CENTRE

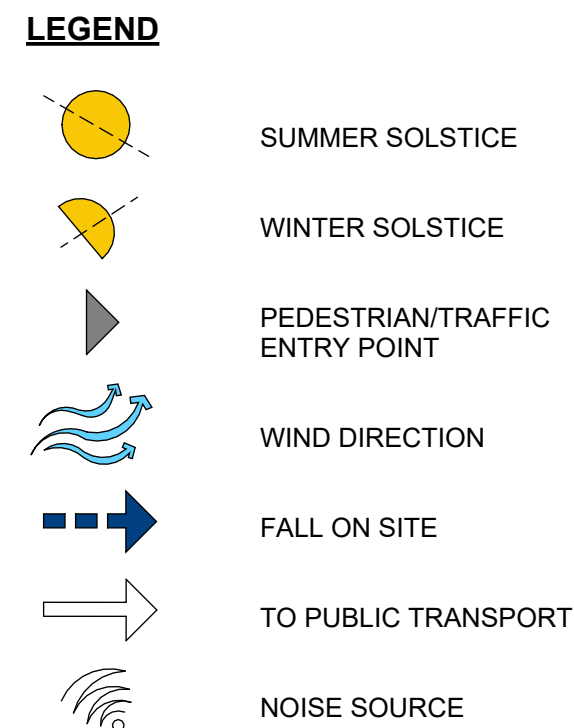
124 NEW ENGLAND HIGHWAY
LOCHINVAR NSW 2321

SHEET DA12
CHILDCARE CENTRE
ELEVATIONS

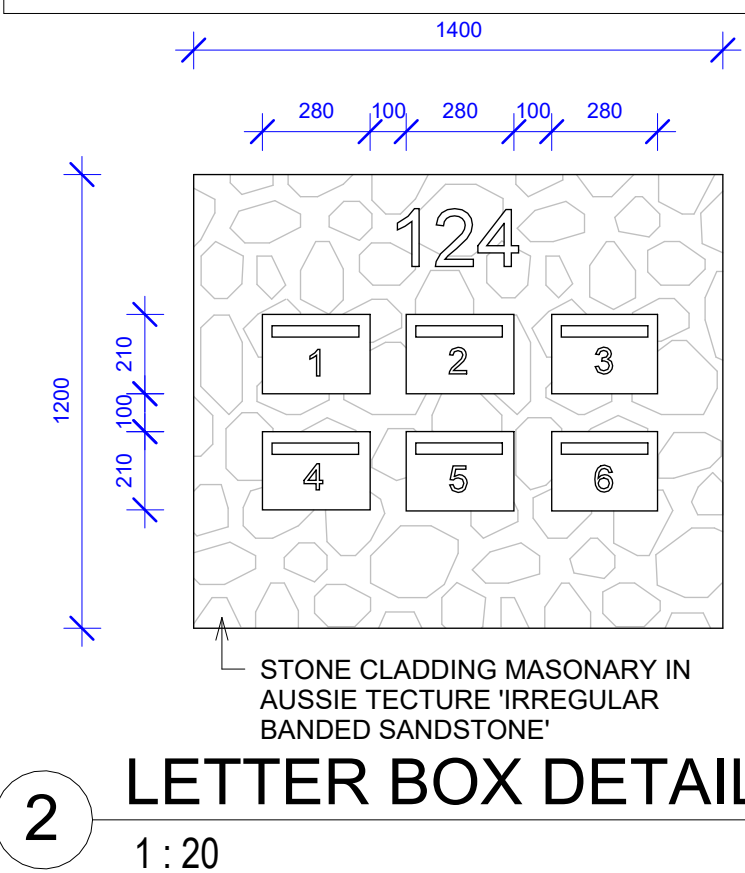
Project number	RPL-20240
Project Issue Date	11.04.2025
Drawn by	E
Checked & Approved by	H GROUP

RPL-202401

Scale 1 : 100

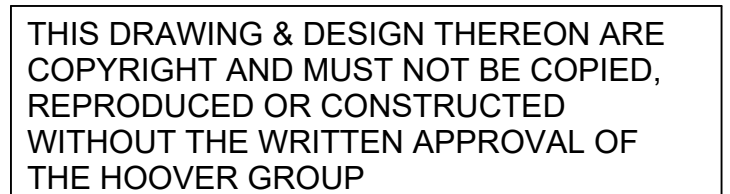


3 SITE
1 : 200

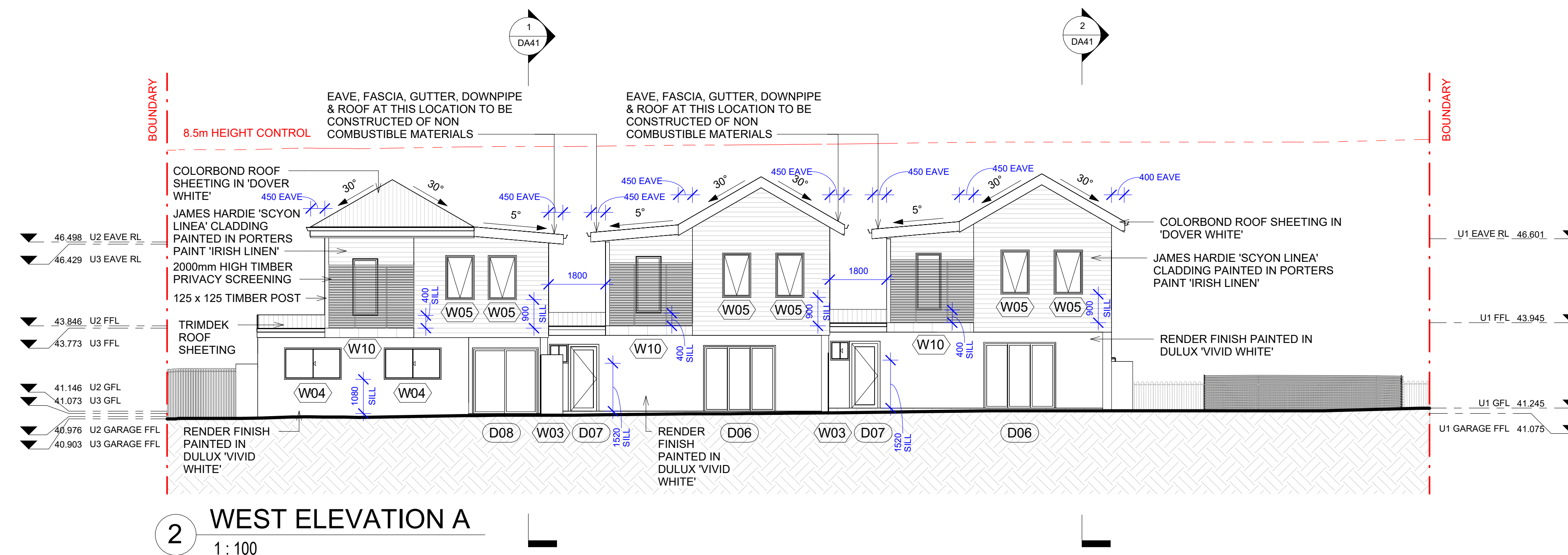


Scale As indicated

NOTE: ALL EAVES, FASCIAS, GUTTERS, DOWNPIPES AND ROOF TO BE CONSTRUCTED OF NON COMBUSTIBLE MATERIALS BETWEEN UNITS 1 & 2, 2 & 3, 4 & 5, 5 & 6 AS PER BCA REQ PART 9.2.9



THIS DRAWING & DESIGN THEREON ARE
COPYRIGHT AND MUST NOT BE COPIED,
REPRODUCED OR CONSTRUCTED
WITHOUT THE WRITTEN APPROVAL OF
THE HOOVER GROUP



RPL GROUP	
PROPOSED TOWNHOUSES	
124 NEW ENGLAND HIGHWAY LOCHINVAR 2321	
SHEET DA37 DETAILED UNIT ELEVATIONS	
Project number	RPL-202401
Project Issue Date	11.04.2025
Drawn by	CC
Checked & Approved by	H GROUP
RPL-202401	
Scale	1 : 100

Window Schedule			
Mark	Height	Width	Comments
W01	1200	2410	FIXED SLIDING COMBO WINDOW
W02	450	1500	SLIDING WINDOW
W03	600	600	SLIDING WINDOW (COMBINATION WITH D07)
W04	1000	1800	SLIDING WINDOW
W05	1400	900	AWNING WINDOW
W06	450	700	SLIDING WINDOW
W07	600	600	SLIDING WINDOW
W08	1500	1000	FROSTED AWNING WINDOW
W09	1900	700	FIXED WINDOW
W10	1800	800	FIXED WINDOW
W11	800	2000	FROSTED FIXED WINDOW
W12	500	1800	FIXED SLIDING COMBO WINDOW
W13	800	2000	FIXED WINDOW
W14	1900	700	FROSTED FIXED WINDOW



HOOVERGROUP
DESIGN & DEVELOPMENT



**BUILDING DESIGNERS
ASSOCIATION OF AUSTRALIA**



**ACCREDITED
BUILDING DESIGNER**

Architectural drawing of the West Elevation B of a building, showing three units. The drawing includes a height control line at 8.5m and a scale of 1:100.

Left Unit:

- Roof: EAVE, FASCIA, GUTTER, DOWNPIPE & ROOF AT THIS LOCATION TO BE CONSTRUCTED OF NON COMBUSTIBLE MATERIALS
- Exterior: TIMBER SCREENING, COLORBOND ROOF SHEETING IN 'DOVER WHITE', JAMES HARDIE 'SCYON LINEA' CLADDING PAINTED IN PORTERS PAINT 'IRISH LINEN'
- Windows: W01, W10, W08, W08
- Doors: D03, D01
- Ground Level: 1800 HIGH TIMBER FENCE, 40.738 U5 GFL, 40.701 U6 GFL
- Foundation: 40.571 U5 GARAGE FFL, 40.531 U6 GARAGE FFL

Middle Unit:

- Roof: EAVE, FASCIA, GUTTER, DOWNPIPE & ROOF AT THIS LOCATION TO BE CONSTRUCTED OF NON COMBUSTIBLE MATERIALS
- Exterior: TRIMDEK ROOF SHEETING, TIMBER SCREENING
- Windows: W08, W08, W10, W01
- Doors: D03, D01
- Ground Level: 1800 HIGH TIMBER FENCE, 40.738 U5 GFL, 40.701 U6 GFL
- Foundation: 40.571 U5 GARAGE FFL, 40.531 U6 GARAGE FFL

Right Unit:

- Roof: EAVE, FASCIA, GUTTER, DOWNPIPE & ROOF AT THIS LOCATION TO BE CONSTRUCTED OF NON COMBUSTIBLE MATERIALS
- Exterior: TRIMDEK ROOF SHEETING, FROSTED WINDOWS, TIMBER SCREENING
- Windows: W10, W01, W08, W08
- Doors: D03, D01
- Ground Level: 1800 HIGH TIMBER FENCE, 40.738 U5 GFL, 40.701 U6 GFL
- Foundation: 40.571 U5 GARAGE FFL, 40.531 U6 GARAGE FFL

General Notes:

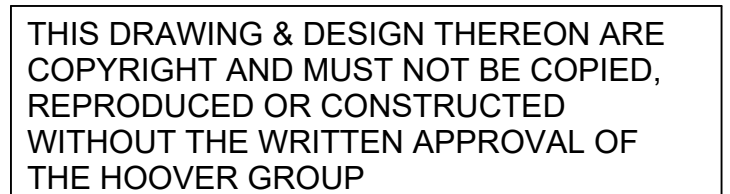
- 8.5m HEIGHT CONTROL
- STONE CLADDING IN AUSSIE TEXTURE 'IRREGULAR BANDED' SANDSTONE
- TIMBER POST 90 x 90
- RENDER FINISH PAINTED IN DULUX 'VIVID WHITE'
- GILDEROL 'MADISON' STYLE PANEL LIFT DOOR
- 170 STEP
- 700 SILL
- 300 SILL
- 900 SILL
- 450 EAVE
- 30°
- 5°
- 1800
- 40.137 U5 EAVE RL, 40.052 U6 EAVE RL
- 43.438 U5 FFL, 43.401 U6 FFL
- 40.738 U5 GFL, 40.701 U6 GFL
- 40.571 U5 GARAGE FFL, 40.531 U6 GARAGE FFL
- 40.137 U5 EAVE RL, 40.052 U6 EAVE RL
- 43.438 U5 FFL, 43.401 U6 FFL
- 40.738 U5 GFL, 40.701 U6 GFL
- 40.571 U5 GARAGE FFL, 40.531 U6 GARAGE FFL



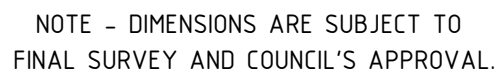
PROPOSED RENDER WALL FINISH
REF IMAGE (SOURE: MOOOOL)

RPL GROUP	
PROPOSED TOWNHOUSES	
124 NEW ENGLAND HIGHWAY LOCHINVAR 2321	
SHEET DA38 DETAILED UNIT ELEVATIONS	
Project number	RPL-202401
Project Issue Date	11.04.2025
Drawn by	CC
Checked & Approved by	H GROUP
RPL-202401	
Scale	1 : 100

NOTE: ALL EAVES, FASCIAS, GUTTERS, DOWNPIPES AND ROOF TO BE CONSTRUCTED OF NON COMBUSTIBLE MATERIALS BETWEEN UNITS 1 & 2, 2 & 3, 4 & 5, 5 & 6 AS PER BCA REQ PART 9.2.9



RPL GROUP	
PROPOSED TOWNHOUSES	
124 NEW ENGLAND HIGHWAY LOCHINVAR 2321	
SHEET DA39 DETAILED UNIT ELEVATIONS	
Project number	RPL-202401
Project Issue Date	11.04.2025
Drawn by	CC
Checked & Approved by	H GROUP
RPL-202401	
Scale	1 : 100



DRAFT
16/09/2024

כ

ROWCLIFF
CIRCUIT

36.385

1
DP...

NOTE - DIMENSIONS ARE SUBJECT TO
FINAL SURVEY AND COUNCIL'S APPROVAL.

PLAN OF SUBDIVISION OF
LOT 2 DP.....
IN A PROPOSED SUBDIVISION OF
LOTS 1, 2 & 3 DP1052148

L.G.A. MAITLAND
Locality: LOCHINVAR
Reduction Ratio 1:200
Lengths are in metres.

Registered:

DRAFT STRATA

REV 0
DATE: 13/03/2025