

## Outline of Proposal

**Site Address** 36 SANCTUARY DRIVE, LOCHINVAR

---

**Applicant Name** LOCHINVAR RIDGE ESTATE PTY LTD

---

**Applicant Address** SUITE 5.14/5 CELEBRATION DRIVE, BELLA VISTA NSW 2153

---

### Building and other structures currently on the site

DWELLING HOUSE, POOL, HARDSTAND/PAVING, PERGOLA, METAL SHED

---

---

---

---

### Brief description of the proposal

DEMOLITION OF POOL, SURROUND (PAVING), PERGOLA, METAL SHED & PATHWAYS

---

---

---

---

---

## Demolition Stage

*Materials Management / Disposal*

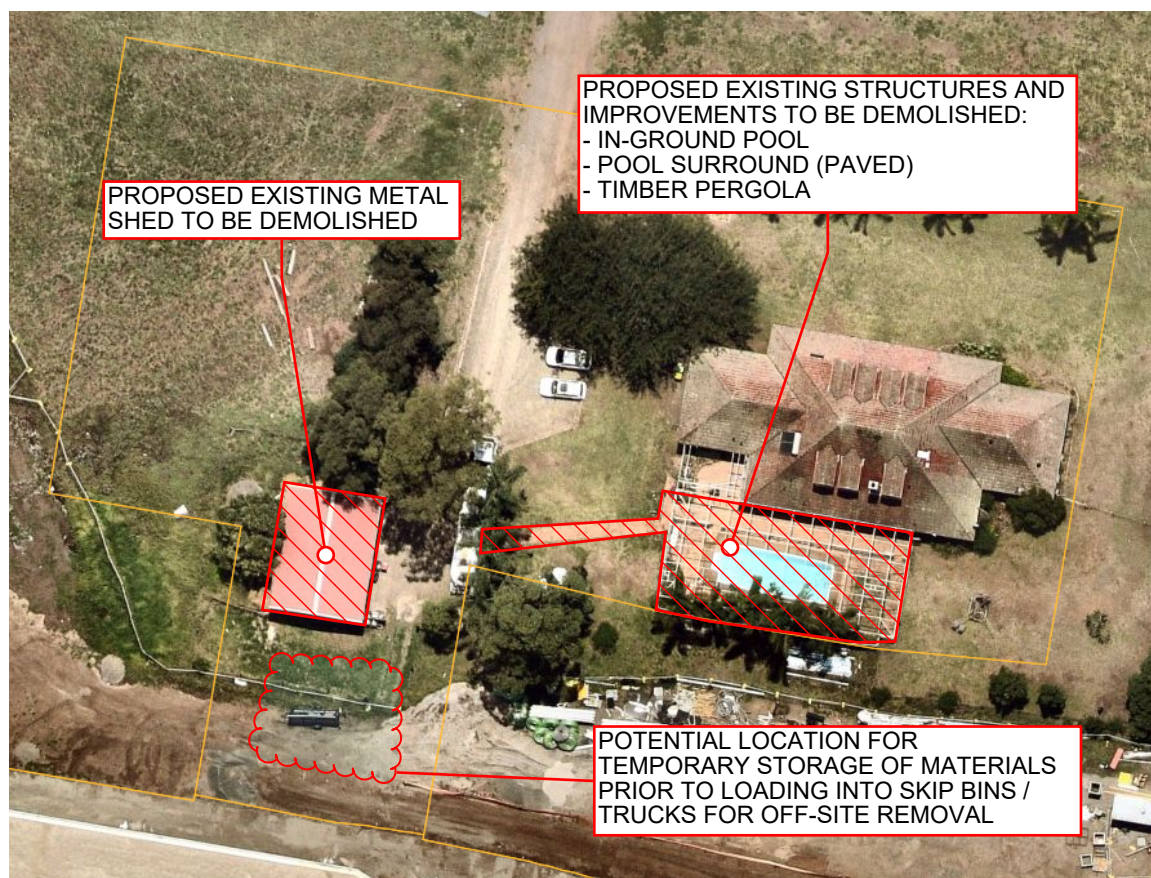
*36 Sanctuary Drive, Lochinvar*

Materials On-Site		Destination		
Type of Material	Estimated Volume (m <sup>3</sup> ) / Weight (T)	Reuse and Recycling		Disposal
		On-Site (Proposed Re-use / Recycling Method)	Off-Site (Contractor / Recycling Outlet)	Contractor and Landfill Site
Excavation Material	To be determined	N/A	To be removed by Contractor on completion of works and disposed of lawfully.	Maitland Resource Recovery Facility, 109 Mount Vincent Road, East Maitland
Green Waste (Topsoil and Trees)	Nil	N/A	N/A	N/A
Fibreglass (Pool Shell Approx 11m x 4m)	1.1 T	To be separated and collected on site.	To be removed by Contractor on completion of works and disposed of	Maitland Resource Recovery Facility, 109 Mount Vincent Road, East Maitland
Bricks / Paving (Pool Surround, etc)	13.2 T	To be separated and collected on site.	To be removed by Contractor on completion of works and disposed of	To suitable recycling facility
Timber Pergola	1 T	To be separated and collected on site.	To be removed by Contractor on completion of works and disposed of	Maitland Resource Recovery Facility, 109 Mount Vincent Road, East Maitland
Concrete (Shed Slab, etc)	30 T	To be separated and collected on site.	To be removed by Contractor on completion of works and disposed of	To suitable recycling facility
Metal (Shed Frame, Sheeting, etc)	10 T	To be separated and collected on site.	To be removed by Contractor on completion of works and disposed of	Suitable recycling facility (if available), otherwise Maitland Resource Recovery Facility, 109 Mount Vincent Road, East Maitland
Other - Mixed Waste	<5 m <sup>3</sup>	To be separated and collected on site.	To be removed by Contractor on completion of works and disposed of	Maitland Resource Recovery Facility, 109 Mount Vincent Road, East Maitland

# PROPOSED DEMOLOTION WORKS 36 SANCTUARY DRIVE, LOCHINVAR



## LOCALITY / CONTEXT PLAN



## SITE PLAN

NOTE: MATERIALS GENERATED BY DEMOLITION WORKS WILL BE STORED IMMEDIATELY ADJOINING THE DEMOLITION SITE FOR SORTING BEFORE BEING IMMEDIATELY LOADED INTO SKIP BINS / TRUCKS FOR OFF-SITE DISPOSAL. MATERIALS SHALL NOT BE STORED FOR A PERIOD EXCEEDING 2 WORKING DAYS PRIOR TO OFF-SITE REMOVAL.