

SITE WASTE MANAGEMENT AND MINIMISATION PLAN

OUTLINE OF PROPOSAL

1. SITE ADDRESS:

Proposed Lots 301-304 and 719 of DA/2-22/912.

2. APPLICANT NAME:

Stevens Land Pty Ltd

3. APPLICANT ADDRESS:

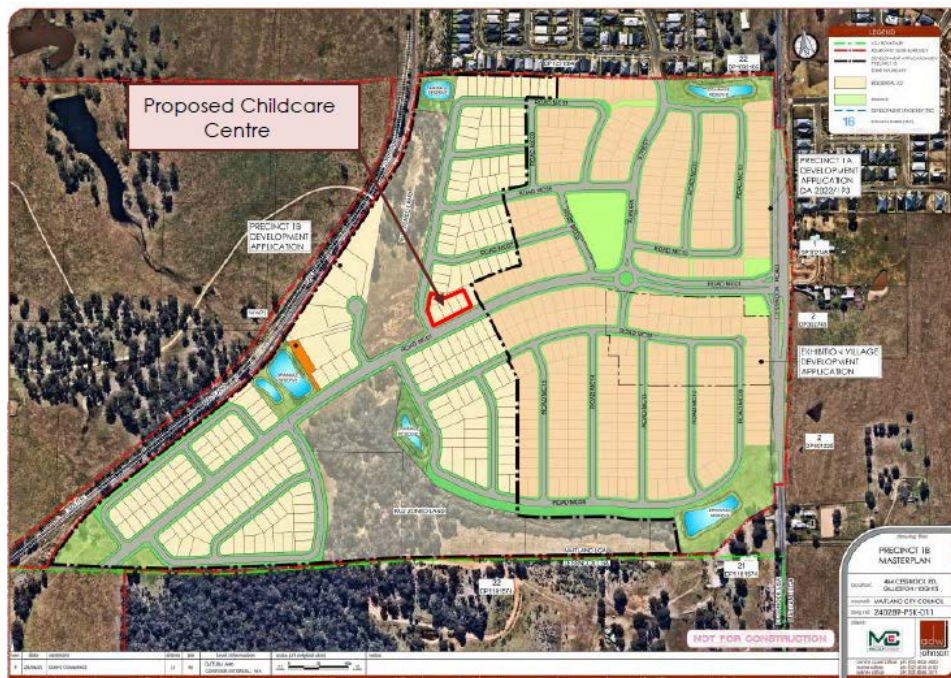
Suite 6, 257-259 Central Coast Highway, Erina

4. BUILDINGS & OTHER STRUCTURES CURRENTLY ON SITE:

- Vacant

5. BRIEF DESCRIPTION OF THE PROPOSAL:

- Proposed Childcare facility
- With Associated Landscaping, Car Parking, Earthworks & Signage



DEMOLITION PHASE

1. N/A

ONGOING OPERATIONS PHASE – CHILDCARE

1. A private waste contractor will be engaged to remove general waste from the child care centre on a weekly basis.
2. A private recycling contractor will be engaged to remove recycling from the child care centre on a weekly basis.

CONSTRUCTION PHASE

The waste will be separated on site by builder's contractors and builder's labourers during the construction stage. The site will be checked on a regular basis to make sure no recyclable materials are mixed with non-recyclable materials, and to set aside on site an area to store the recyclable materials for transportation to local recycling plants. The site manager will erect a sign on site for waste areas and will inform the builder's staff where material is to be collected for recycling. The site manager and/or builder will impose the execution of the waste separation policy on a regular basis and to have on-going checks.

DESCRIPTION		DESTINATION	
WASTE MATERIALS	Vol (m³)	ON SITE	OFF SITE
Excavation Material/ Garden Waste	5m³	-	Taken to local site receiving clean fill material. Contaminated material taken to local waste management facility.
Tiles	<1m³	-	Taken to local waste management facility.
Concrete	1.5m³	-	Removed from site by concrete contractor.
Timber	<1m³	-	Taken to local Recycling Facility.
Plasterboard	2m³	-	Taken to local waste management facility.
Metal	1.5m³	-	Taken to local Recycling Facility.
Other	<1m³	-	Taken to local waste management facility.