



Bulky waste service

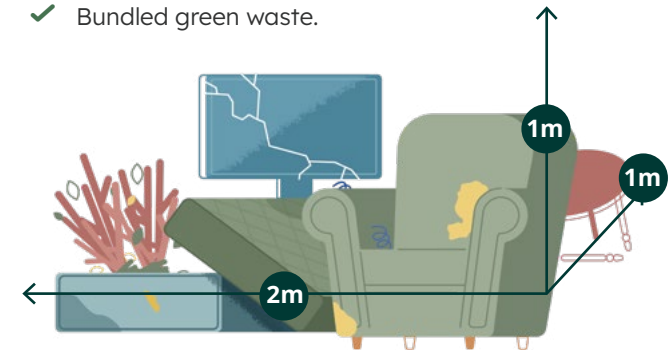
Which option should you choose?

Here's a list of what we will collect from your kerb or what you can drop off at our waste facility.

Item	250kg voucher	Kerbside collection
Mattresses (max. of two)	✓	✓
Household appliances and electronics (e-waste)	✓	✓
Dryers, washing machines, and dishwashers	✓	✓
Bicycles, BBQs and scrap metal	✓	✓
Furniture such as lounges, chairs and bedside tables	✓	✓
Carpet, rugs and linoleum	✓	✓
Toys and sporting goods	✓	✓
Tree branches < 100mm thick	✓	✓
Tree branches (any size) and other garden waste	✓	
Fridges, freezers and air conditioners	✓	
Car tyres and rims (max. of two)	✓	
Building and renovation waste such as concrete, bricks, tile, stone, plasterboard and soil	✓	
Windows, glass and mirrors	✓	
Household rubbish and recyclables	✓	

Kerbside collection will collect up to two cubic metres of eligible bulky waste from your kerb, including:

- ✓ General bulky waste like furniture, soft furnishings, BBQs and sporting equipment.
- ✓ Electronic waste such as TVs, laptops and mobile phones.
- ✓ Up to two mattresses.
- ✓ Bundled green waste.



If you have a lot of waste you need to dispose of, consider combining your bulky waste services.

Waste facility fees and charges

If you've already used your bulky waste services for the financial year, our waste facility is open year round. Visit maitland.nsw.gov.au/our-services/waste-and-recycling for a list of fees and charges.

Maitland Resource Recovery Facility

109 Mount Vincent Rd,
East Maitland NSW 2323
02 4934 1888

Your bulky waste services are now digital and you can choose to either book a kerbside collection or request a waste voucher for our waste facility.

You now have two waste services each financial year, and you can choose from one of the disposal options below or mix and match as you need.

Book a kerbside collection

Council will collect your bulky waste from your property on a date you select.

Option 1 | 2 cubic metres per booking



Redeem a waste voucher

Your waste vouchers are now digital. Instantly receive a code which you can present at the Maitland Resource Recovery Facility located at 109 Mount Vincent Road, East Maitland NSW 2323.

Option 2 | 250kg per voucher



Mix and match

Choose one of each option to suit your needs.

Follow these simple steps to redeem a voucher or book a collection



Visit maitland.nsw.gov.au/bulky-waste and enter your details and choose an option:

Bookings available online

Book a kerbside collection

Select the items you want to dispose of



Pick a collection date

Place your waste on the kerb the day before your collection date



Council will come and collect your items

Redeem a waste voucher

Online



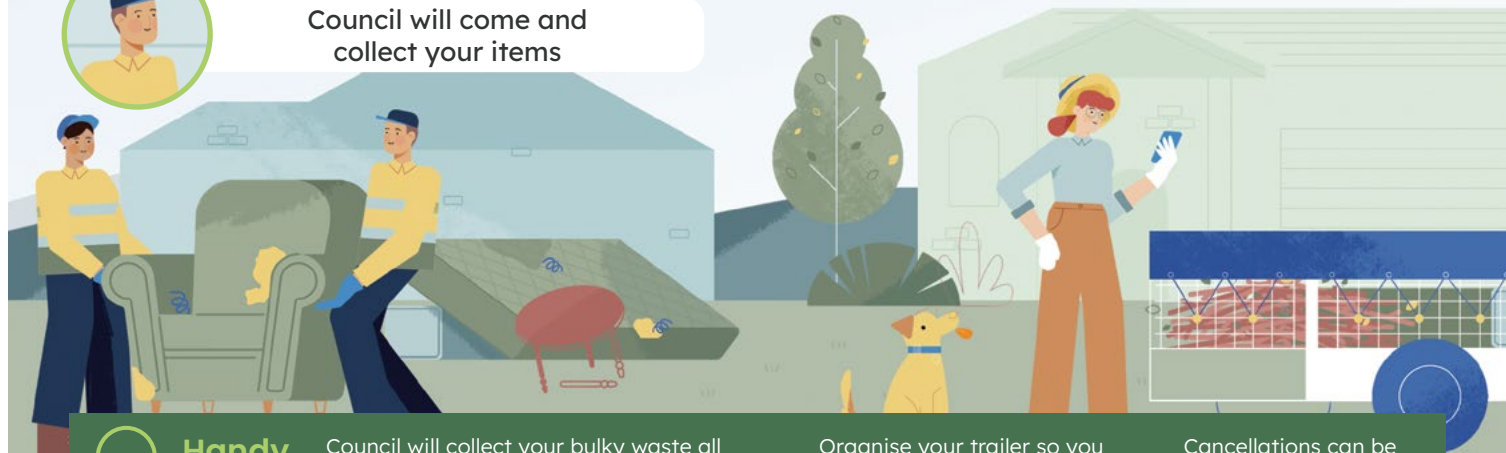
Log in and enter your phone number or email to instantly receive a code on your mobile device



Load your trailer and head to the waste facility



Simply present your code and proof of residence when you get there



Handy Tips

Council will collect your bulky waste all on the same day with different trucks for each type of waste and recyclables

Organise your trailer so you can easily separate recyclables at the waste facility

Cancellations can be made up to 72 hours prior via the website