

Gillieston Heights Community Hub: Activity Room 1

Activity Room 1 Inclusions

- Seating capacity 110
- Size of room 195m²
- 110 x Indoor black fold function chairs
- 110 x Indoor timber chairs
- 110 x Outdoor white ceremony chairs
- 13 x rectangle tables
- Airconditioning
- Car parking
- Accessable amenities
- Projector Screen ***HDMI Cord and laptop to be supplied by Hirer**
- 29m² commercial kitchen and 4m² pantry
- Kitchen inclusions:
 - Stainless steel double bowl kitchen sink
 - Wall mounted hand basin
 - Dishwasher
 - Electric induction range and oven
 - External grease trap
 - 3 phase power
 - Zip hydro tap (chilled and boiling water)
 - Double door refrigerator
 - Microwave
 - Crockery, cutlery & glasswear
 - Large outdoor fenced yard

2025/2026 FEES AND CHARGES

Standard off peak hourly rate (Weekday, Mon – Fri)	\$48.00
Standard peak hourly rate (Weekend, Sat-Sun)	\$87.00
*Community off peak hourly rate (Weekday, Mon – Fri)	\$35.00
*Community peak hourly rate (Weekend, Sat – Sun)	\$52.00

A bond may be requested by Council. Council allows a complimentary 30 minute bump in/bump out window. Any additional hours beyond this will be charged. *Community rate applies to not-for-profit community groups and organisations based in Maitland. Certification needs to be provided to receive the community rate.



Redwood Drive, Gillieston Heights

recreation@maitland.nsw.gov.au | 02 4934 9700



maitland
CITY COUNCIL

Activity Room 1 Inclusions: Furniture and Storage

13 x Rectangle Tables

- (76cm x244cm) seating 8 to 10 per table
- Located in furniture store 1



110x Timber Function Room Chairs

- Indoor use only
- Located in furniture store 1



2x Microphones

- Located in Pantry



110 x White Ceremony Chairs

- Outdoor use
- Located in furniture store D



Fairy Lights

- Power switch located in Activity 1 store



2x Bar Stools

- Located in Furniture Store D



110x Black Function Room Chairs

- Indoor use only
- Located in Furniture Store D



1x Cocktail Table

- Located in Furniture Store D



1x Wooden Lectern

- Located in Furniture Store D



Activity Room 1 Inclusions: Furniture and Storage

Crockery & Cutlery Plates:

- 120x 180mm Square Plate
- 120x 210mm Square Plate
- 120x 150mm Square Bowl

Glasses & Mugs:

- 120x 200ml Stack Cup
- 120x 150mm Saucer
- 120x 360ml Stack Mug
- 120x 330ml Straight Highball Glass

Cutlery:

- 150x Teaspoons, Forks, Knives, Spoons

Induction Pots and Pans:

- 14cm/0.9L nonstick Open Milk pan
- 16cm/1.4L Covered Saucepan
- 20cm/2.8L Covered Saucepan
- 22cm & 25cm Nonstick Frypan
- 20cm Steamer Insert

1x Projector Screen

- Located in Activity 1

Projector/Screen Use:

- HDMI Cord and Laptop/Computer to be supplied by Hirer



Music Use:

Connect your iPod (or any other audio device) into either the two RCA inputs or 3.55mm input outlined below. *Cords to be supplied by hirer.



Gillieston Heights Community Hub: Activity Room 2

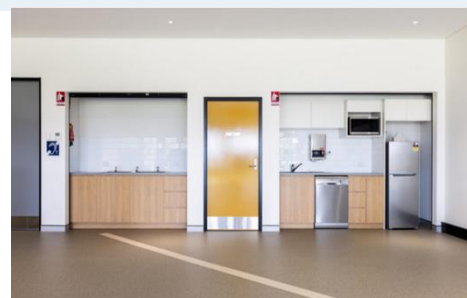
Activity Room 2 Inclusions

- Seating capacity 48
- Size of room 111m²
- 48 x Indoor black fold function chairs
- 6 x rectangle tables
- 10 x round tables
- Airconditioning
- Car parking
- Accessable amenities
- Small outdoor fenced yard
- Covered pergola area with 20m² soft fall space
- Free Wifi
- Kitchenette inclusions:
 - Kitchen sink
 - Microwave
 - Refrigerator
 - Dishwasher
 - Activtiy bench with hand basins at children's height
 - Zip hydro tap (chilled and boiling water)
 - Crockery, cutlery & glasswear
- Screen ***HDMI Cord and laptop to be supplied by Hirer**

2025/2026 FEES AND CHARGES

Standard off peak hourly rate (Weekday, Mon – Fri)	\$44.00
Standard peak hourly rate (Weekend, Sat – Sun)	\$80.00
*Community off peak hourly rate (Weekday, Mon – Fri)	\$32.00
*Community peak hourly rate (Weekend, Sat – Sun)	\$48.00

A bond may be requested by Council. Council allows a complimentary 30 minute bump in/bump out window. Any additional hours beyond this will be charged. *Community rate applies to not-for-profit community groups and organisations based in Maitland. Certification needs to be provided to receive the community rate.



Activity Room 2 Inclusions: Furniture and Storage

6 x Rectangle Tables

- (76cm x 244cm) seating 8 to 10 per table
- Located in furniture store



2x Microphones

- Located in furniture store



10x Round Banquet Tables

- (182cm wide) seating 10 per table
- Located in furniture store



Crockery & Cutlery Plates:

- 50 x 205mm round plate
- 50x 203mm round plate
- 50 x small fruit bowls

66 x Black Function Room Chairs

- Indoor use only
- Located in furniture store



Glasses & Mugs:

- 31 x Glasses
- 50 x Stack mug

Cutlery:

- Knives, forks and spoons

1x Projector Screen

- Located in Activity 2

Projector/Screen Use:

- HDMI Cord and Laptop/Computer to be supplied by Hirer



Music Use:

Connect your iPod (or any other audio device) into either the two RCA inputs or 3.5mm input outlined below. Cords to be supplied by Hirer



Gillieston Heights Community Hub: Meeting Room 1

Meeting Room 1 Inclusions

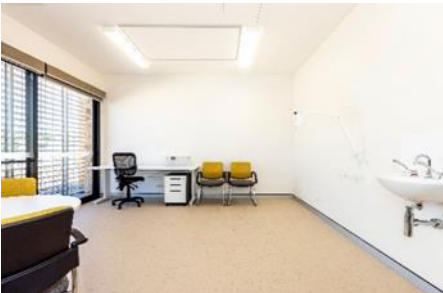
- Seating capacity: 7
- Size of room 7m²
- 1 x Indoor meeting room chair
- 2 x Indoor office chairs
- 1 x Desk for two people
- 1 x Hand basin
- Airconditioning
- Car parking
- Accessable amenities
- Free Wifi
- Kitchenette in foyer which includes:
 - Kitchen sink
 - Microwave
 - Refrigerator
 - Zip hydro tap (chilled and boiling water)

2025/2026 FEES AND CHARGES

Standard off peak hourly rate (Weekday, Mon – Fri)	\$19.90
Standard peak hourly rate (Weekend, Sat – Sun)	\$36.00
*Community off peak hourly rate (Weekday, Mon – Fri)	\$14.50
*Community peak hourly rate (Weekend, Sat – Sun)	\$21.70

Bond may be requested by Council. Council allows a complimentary 30 minute bump in/bump out window. Any additional hours beyond this will be charged.

*Community rate applies to not-for-profit community groups and organisations based in Maitland. Certification needs to be provided to receive the community rate.



Gillieston Heights Community Hub: Meeting Room 2

Meeting Room 2 Inclusions

- Seating capacity 8
- Size of room 8m²
- 8 x Indoor meeting room chairs
- 1 x large oval board room table
- 1 x large TV Screen
- Airconditioning
- Car parking
- Free Wifi
- 16 x Ethernet ports ***Ethernet Cords to be supplied by hirer**
- Accessible amenities
- Kitchenette outside meeting room door which includes:
 - Kitchen sink
 - Microwave
 - Refrigerator
 - Zip hydro tap (chilled and boiling water)

2025/2026 FEES AND CHARGES

Standard off peak hourly rate (Weekday, Mon – Fri)	\$27.90
Standard peak hourly rate (Weekend, Sat – Sun)	\$51.00
*Community off peak hourly rate (Weekday, Mon – Fri)	\$20.30
*Community peak hourly rate (Weekend, Sat – Sun)	\$30.40

Bond may be requested by Council. Council allows a complimentary 30 minute bump in/bump out window. Any additional hours beyond this will be charged.

*Community rate applies to not-for-profit community groups and organisations based in Maitland. Certification needs to be provided to receive the community rate.

