

SAFETY IN DESIGN				
	INDICATES HIGH RISK ACTIVITIES ASSOCIATED WITH WORKING ENVIRONMENT / CONFINED SPACES			
	INDICATES HIGH RISK ACTIVITIES ASSOCIATED WITH WORKING AT HEIGHTS OR FALLING OBJECTS			
	INDICATES HIGH RISK ACTIVITIES ASSOCIATED WITH EARTHWORKS/EXCAVATION			
	INDICATES HIGH RISK ACTIVITIES ASSOCIATED WITH FIRE & EMERGENCIES			
	INDICATES HIGH RISK ACTIVITIES ASSOCIATED WITH MANUAL TASKS AND MAINTENANCE ACCESS			
	INDICATES HIGH RISK ACTIVITIES ASSOCIATED WITH THE MOVEMENT OF PEOPLE			
	INDICATES HIGH RISK ACTIVITIES ASSOCIATED WITH LIVE ELECTRICAL HAZARDS			
	INDICATES HIGH RISK ACTIVITIES ASSOCIATED WITH NOISE EXPOSURE			
	INDICATES HIGH RISK ACTIVITIES ASSOCIATED WITH MECHANICAL PLANT SERVICES			
	INDICATES AMENITIES, FACILITIES & FIRST AID			
	INDICATES JOB SPECIFIC RISKS			
	INDICATES HIGH RISK ACTIVITIES ASSOCIATED WITH STRUCTURAL SAFETY/DEMOLITION			
	INDICATES HIGH RISK ACTIVITIES ASSOCIATED WITH HAZARDOUS SUBSTANCES			

REV	DATE	DESCRIPTION	BY	CHK
A	05.08.2025	FOR HUNTER WATER STAMP	CS	
B	07.08.2025	FOR CLIENT APPROVAL	CS	KB
C	08.08.2025	FOR DA APPROVAL	CS	

BUILDER TO CONFIRM ALL DETAILS, SETOUTS (TILE, ETC), FALLS & CONNECTIONS ON SITE BEFORE CONSTRUCTION

PRINT DATE: 8/08/2025 2:51:06 PM FILE PATH: C:\Users\Caitlyn\Documents\3041_St Nicks East Maitland Expansion_CENTRAL_R24_caitlyn23HAA.rvt



webber

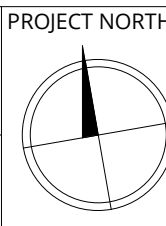
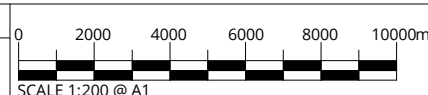
Phone 02 4926 1078
PO Box 907 The Junction NSW 2291
www.webberarchitects.com
Suite 3, Level 1, 426 Hunter Street Newcastle NSW 2300
newcastle@webberarchitects.com
Suite 206, 9 Clarke Street Crows Nest NSW 2006
sydney@webberarchitects.com
National Practice: 200 Webber Plaza NSW 2000 (200) 601 100 100

ISSUED
FOR DA APPROVAL
NOT FOR CONSTRUCTION

SHEET NUMBER: 3041 / DA_0201 / C

SITE + ROOF PLAN
ST NICKS EAST MAITLAND EXPANSION
CATHOLIC DIOCESE OF MAITLAND - NEWCASTLE
24 HUNTER ST, HORSESHOE BEND NSW 2320

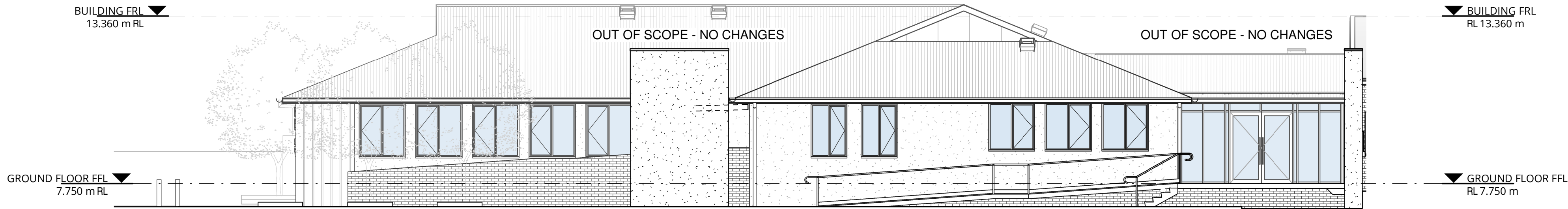
COMMENCEMENT DATE: JULY 2025



PROJECT NORTH

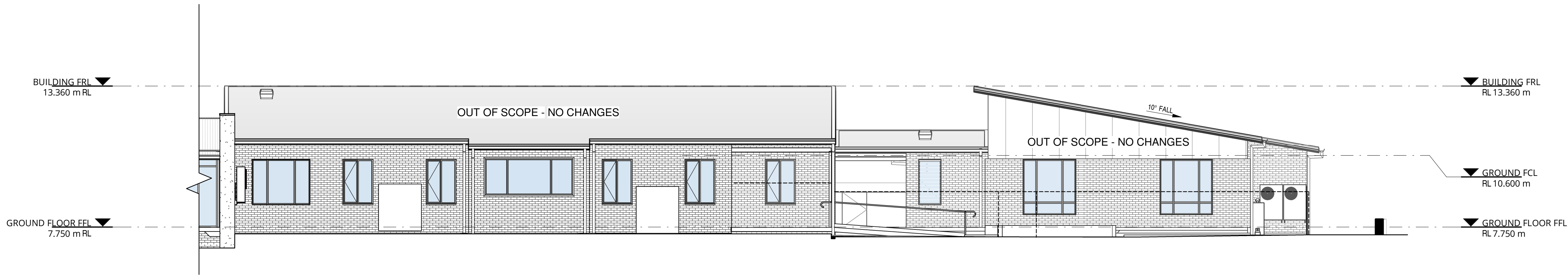
THIS DRAWING AND DESIGN EXPRESSED ARE COPYRIGHT AND REMAIN THE PROPERTY OF WEBBER ARCHITECTS. IN ACCORDANCE WITH THE COMMONWEALTH COPYRIGHT ACT 1968 THIS DRAWING AND DESIGN IN WHOLE OR PART MAY NOT BE USED UNLESS LICENCED BY WEBBER ARCHITECTS. VERIFY ALL DIMENSIONS AND FALLS ON SITE BEFORE CONSTRUCTION AND DO NOT SCALE FROM DRAWINGS.

ABBREVIATIONS	
VALUE	DESCRIPTION
B1	BALUSTRADE - TYPE 1
F1	FENCE - TYPE 1
XB	EXISTING BALUSTRADE
XDP	EXISTING DOWNPIPE
XEG	EXISTING EAVES GUTTER
XFAS	EXISTING FASCIA
XMAS	EXISTING MASONRY
XMRS	EXISTING METAL ROOF SHEETING
XVT	EXISTING VENT

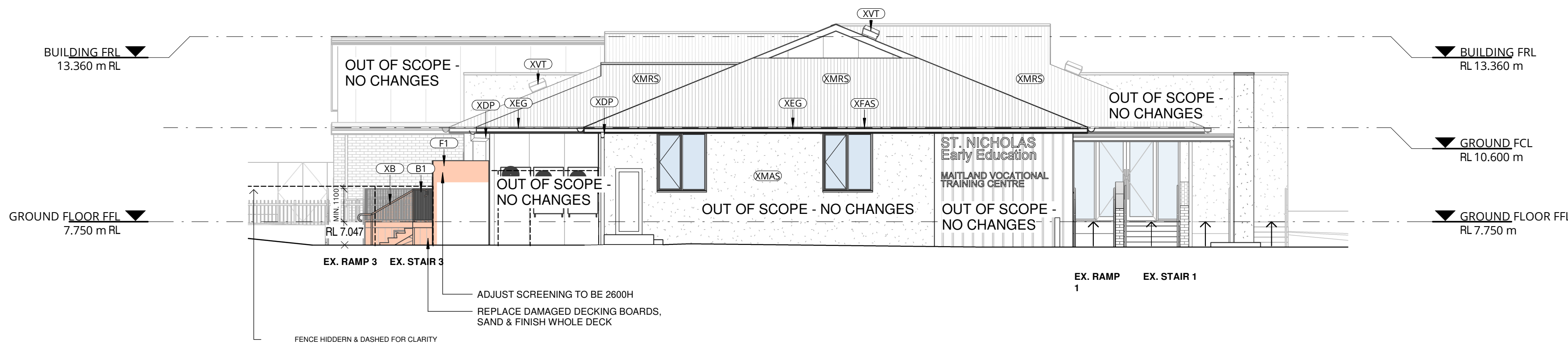


1 ELEVATION SOUTH - PART 1
SCALE 1 : 100

LEGEND:	
	AREA OF WORKS
	DEMOLISHED



2 ELEVATION SOUTH - PART 2
SCALE 1 : 100



3 ELEVATION WEST
SCALE 1 : 100

REV	DATE	DESCRIPTION	BY	CHK
A	14.07.2025	FOR INFORMATION	CS	
B	16.07.2025	FOR CLIENT INFORMATION	CS	KP
C	17.07.2025	FOR CLIENT INFORMATION	CS	
D	05.08.2025	FOR HUNTER WATER STAMP	CS	
E	07.08.2025	FOR CLIENT APPROVAL	CS	KB
F	08.08.2025	FOR DA APPROVAL	CS	

DRAWINGS COLOUR CODED
PRINT ALL COPIES IN COLOUR

PRINT DATE: 8/08/2025 2:51:35 PM FILE PATH: C:\Users\CaitlynShenwood\Documents\3041 St Nicks East Maitland Expansion_CENTRAL R24_caitlyn23HAA.rvt



webber

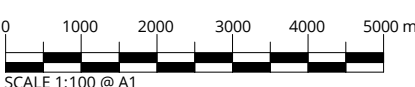
Phone 02 4926 1078
PO Box 807 The Junction NSW 2291
www.webberarchitects.com
Suite 3, Level 1, 428 Hunter Street Newcastle NSW 2300
newcastle@webberarchitects.com
Suite 206, 9 Clarke Street Crows Nest NSW 2006
sydney@webberarchitects.com

ISSUED
FOR DA APPROVAL
NOT FOR CONSTRUCTION

SHEET NUMBER: 3041 / DA_0402 / F

ELEVATIONS - SHEET 2
ST NICKS EAST MAITLAND EXPANSION
CATHOLIC DIOCESE OF MAITLAND - NEWCASTLE
24 HUNTER ST, HORSESHOE BEND NSW 2320

COMMENCEMENT DATE: JULY 2025



BUILDER TO CONFIRM ALL DETAILS, SETOUTS (TILE, ETC), FALLS & CONNECTIONS ON SITE BEFORE CONSTRUCTION

THIS DRAWING AND DESIGN EXPRESSED ARE COPYRIGHT AND REMAIN THE PROPERTY OF WEBBER ARCHITECTS. IN ACCORDANCE WITH THE COMMONWEALTH COPYRIGHT ACT 1968 THIS DRAWING AND DESIGN IN WHOLE OR PART MAY NOT BE USED UNLESS LICENCED BY WEBBER ARCHITECTS. VERIFY ALL DIMENSIONS AND FALLS ON SITE BEFORE CONSTRUCTION AND DO NOT SCALE FROM DRAWING.