

maitland

city council



Multicultural Community Directory

Contents

Acknowledgement of Country	3
Welcome to Maitland	4
Overview of Region	5
Who We Are	6
Ways to Connect with Council	7-8
Customer Experience Team	7
Website, Live Chat and Email	7
Social Media	7
Council Meetings	8
Maitland Your Say	8
City Facilities	9-13
Libraries	9
Community Centres	9
Aquatic Centres	11
Parks, Playgrounds and Ovals	12
Community Events	14
Riverlights Multicultural Festival	15
Connect With Your Community	16-21
Our Vibrant City	16
Arts and Culture	17
Health and Wellbeing	18
Volunteer and Make a Difference	19
Get Involved Locally	19
Become a Citizen	20
Waste and Recycling	22-23
Collection Services	22
Your Kerbside Bin	22
Putting Your Bins Out	23
Mount Vincent Road Waste Management Centre	23
Animals and Pets	24
Registering Your Pet	24
Rates	25
How to Pay Your Rates	25
Multicultural Community Services	26-27
Who To Contact	28-29
Map of Maitland	30-31

Acknowledgement

Maitland City Council acknowledge the Wonnarua People as the Traditional Owners and Custodians of the land within the Maitland Local Government Area. Council pays respect to all Aboriginal Elders, past, present and future with a spiritual connection to these lands.





Welcome to Maitland

Message from the Mayor

Dear resident,

Welcome to Maitland, and thank you for choosing to make your home here.

You join a growing number of people who are discovering the many benefits of living and working in our vibrant community.

Whether you're looking to connect with neighbours, pursue learning opportunities, spend time in the outdoors, practice your faith, chase a passion, or support your community, Maitland is the place to be.

There is such a diverse range of leisure, business, and cultural activities on offer across Maitland.

This booklet will introduce the many services provided by Maitland City Council. It includes information about services and other aspects of civic and community life to help you settle in and become part of the Maitland community.

For more information about the many ways, we serve our community and how we can assist you, please visit our website at maitland.nsw.gov.au

If you have any questions, please contact our friendly Customer Experience Team on 02 4934 9700 or use the 'Live Chat' button on our website. They will be happy to help you.

I hope you enjoy getting to know your new community.

All the best,

Philip Penfold
Mayor

Welcome to Maitland

We are a vibrant and growing city that offers a contemporary urban lifestyle, just minutes from picturesque rural landscapes.

Maitland community welcomes all people and although moving to a new place can be daunting, we want to assist refugees, and new residents from culturally and linguistically diverse backgrounds settle in and become part of our community.

Overview of Region

LOCATION

The Maitland Local Government Area (LGA) is situated in the Lower Hunter Valley of NSW, which is 165km north of Sydney and is located on the Hunter River. The region is also 30 minutes to the Hunter vineyards, Newcastle, Port Stephens, and is within proximity to freight rail access, airports, and shipping terminals.

HISTORY

Maitland is embedded with local Aboriginal history and heritage of the Wonnarua people, the traditional Custodians and Owners of the Maitland area. Aboriginal culture is the oldest living culture in the world. The Wonnarua people have been living in the Maitland Region for tens of thousands of years and have maintained a strong sense of cultural identity despite the impact of colonisation and dispossession on their traditional lands and culture.

Maitland's development is deeply connected with the Hunter River bringing trade, prosperity and life to the early town. As the town grew and the development of a rail and road corridor created an abundance of transport options, it became an essential regional centre for the colony. Its main street has a very intact representation of early Australian architecture.

LIVEABILITY

The area is known for its historic city centre, attractive rural landscape, and moderate climate. The region enjoys rich alluvial flats of the Hunter and Paterson Rivers and a rich agricultural hinterland. The main industry sector includes manufacturing, tourism, construction, real estate, mining, and retail trade. Health Care and Social Assistance is the region's leading employer. It is amongst the most productive areas in NSW.



Who We Are

The Maitland LGA is a vibrant city with a population of 83,203 people who are diverse and ever growing. Since 2011, the population has increased by 20,525 people and by 2023, Maitland LGA is predicted to have over 90,000 residents. The median age group is 30-39 years old, while 18.7% of the population is 60 years or older.

Council recognises cultural diversity as one of the city's assets and supports the building of community capacity. Our city's cultural diversity is expanding with 13% of our residents born overseas and 9% speaking a language other than English at home. Within the Maitland LGA, the fastest growing cultural communities are Zimbabwe with an increase of 116%, the Indian community with an increase of 90.8% and the Philippines community with an increase of 28.2% from 2011 to 2016. The top five languages spoken at home other than English include Mandarin, Cantonese, Malayalam, Tagalog and Afrikaans.

Maitland has excellent health services, schools, residential housing and retail shopping. The location also means Maitland is within close proximity to most places, which affords access to wonderful recreational experiences, employment opportunities and lifestyle choices.

The Maitland LGA area covers 396km² from Woodberry in the east, Lochinvar in the west, Tocal to the north and Gillieston Heights to the south, providing plenty of room to move and pursue the lifestyle you desire.

Our Welcome to Maitland video is a great resource to get to know the area and learn what residents already know, that Maitland will weave its magic and make a lasting impression on you.



Please scan the QR code to view our Welcome to Maitland Video



Ways to Connect with Council

Maitland City Council is committed to keeping our community informed. We offer a number of ways for residents to get in touch with Council.

Customer Experience Team

To keep up to date with the latest information, visit maitland.nsw.gov.au, follow our social media channels or contact our friendly Customer Experience Team.

You can contact us:



In person

Administration building
285-287 High Street
Maitland NSW 2320

8.30am - 5.30pm
Monday - Friday



Phone

02 4934 9700
8.00am - 6.00pm
Monday - Friday



Website Live chat

maitland.nsw.gov.au
8.00am - 6.00pm
Monday - Friday



Email

info@maitland.nsw.gov.au
8.00am - 6.00pm
Monday - Friday

Social Media



facebook.com/maitlandcitycouncil



instagram.com/mymaitland



twitter.com/MaitlandCouncil



mait.city/YouTubeChannel

Council Meetings

The Councillors meet twice a month on Tuesdays at 5.30pm, and the public are welcome to attend Council Meetings. To find out more, including where the meetings take place and what's on the agenda, visit mait.city/CouncilMeetings

If you wish to speak at a Council meeting about an item on the agenda, you must lodge a Public Access Speaker Request Form that can be downloaded at mait.city/CouncilMeetingPublicAccess

Maitland Your Say

Maitland City Council provides multiple opportunities for community members to have their say and give feedback on issues that are important to them. These opportunities take the form of workshops, forums, surveys and more.

When making decisions or problem solving, Council staff and Councillors are committed to engaging with the community and making it easier for people to have their say, particularly online.

Opportunities for current community engagement are advertised on maitlandyoursay.com.au, facebook.com/maitlandcitycouncil and in newsletters.





City Facilities

Libraries

Maitland has libraries located in Central Maitland, East Maitland, Rutherford and Thornton, where you can access technology, as well as online and physical copies of a range of books, music, movies, podcasts, research material and local history. The libraries are important community hubs and are host to lots of incredible events and activities that are available to everyone.

For more information visit maitlandlibrary.com.au

Community Centres

Community centres are public locations where community members can gather for a range of social, educational, and group activities and programs.

Maitland has a range of community centres, including Rutherford Community Centre, Metford Community Centre, Bruce Street Community Hall East Maitland, Noel Unicomb Community Hall Woodberry, Pat Hughes Community Hall Thornton, Tenambit Community Hall and Maitland Town Hall. Each centre has an array of rooms that are available to hire for an event or meeting. Maitland Senior Citizens Centre, Walka Water Works, Maitland Goal, Morpeth School of Arts and Shamrock Hill Multi-Purpose Centre also all have space to hire for functions, social groups or meetings.

For more information visit mait.city/Venues



Aquatic Centres

Maitland has two aquatic centres - East Maitland and Maitland Aquatic Centre.

MAITLAND AQUATIC CENTRE

Maitland Aquatic Centre is located in the heart of Maitland and features an indoor 25m pool that is open all year round, and an outdoor 50m pool, toddler pool and a splash pad that is open from October to April. Learn to swim lessons and fitness programs are available at Maitland Aquatic Centre.

To make a booking, find out about lane availability or to hire the Aquatic Centre visit mait.city/AquaticsBookings

For more information visit maitland.nsw.gov.au/aquatics

📍 Les Darcy Drive, Maitland

☎ 02 4933 5073

EAST MAITLAND AQUATIC CENTRE

East Maitland Aquatic Centre is open from October to April annually and features an outdoor 50m swimming pool, a shaded baby pool, children's play equipment and a cafe with picnic and eating areas.

To make a booking, find out about lane availability or to hire the Aquatic Centre visit mait.city/AquaticsBookings

For more information visit maitland.nsw.gov.au/aquatics

📍 41 Narang Street, East Maitland

☎ 02 4933 3488



Parks, Playgrounds and Ovals

Maitland is fortunate to have a range of green open spaces, ovals, parks and playgrounds. Examples of these open spaces are Maitland Park, Bakers Brickyard, Stockade Hill, Wirraway Park, Norm Chapman, Roy Jordan, Thornton, and Ernie Judd Oval, Coronation and John Wilkinson Sporting Complexes.

Get out and enjoy our city by playing, running, walking, swimming, skating and cycling at locations across the city. For more information about parks and ovals in Maitland visit [mait.city/ParksAndPlaygrounds](https://maitland.nsw.gov.au/ParksAndPlaygrounds)

MAITLAND REGIONAL ATHLETICS CENTRE

The Maitland Regional Athletics Centre is a state of the art facility and part of the Maitland Regional Sports Complex located next to Maitland Regional Sportsground in Central Maitland.

The Centre includes a World Athletics Certified synthetic athletics track, world class playing field, track and field facilities, floodlighting, a grandstand with a capacity of 560, inclusive change rooms, canteen and two large function spaces.

For more information contact recreation@maitland.nsw.gov.au







Community Events

Community events are a great way for the community to gather to celebrate what we love about our city and create long lasting community connection.

When planning an event that you would like to promote, depending on the nature and capacity of your event, you can list it on mymaitland.com.au

It is also recommended that you get in touch with Council to verify if any approvals are required for your event, especially if you are serving alcohol or food or would like to close a road. A great place to begin is by contacting our Customer Experience Team on 02 4934 9700.

Applications for holding a special event must be submitted 16 weeks prior to an event date for a temporary road closure application or 6 weeks prior to an event for a special event with no road closure. Further information can be found in the Special Events Policy at mait.city/PlanningAnEvent

Maitland is a lively city where something is always happening, and there's always an array of unique free community events on offer throughout the year. These include food and wine festivals, exhibitions, multicultural events, conventions, and community and sporting events. Every year, Council organises seven major flagship events for the city. These events are popular with both residents and visitors, attracting over 130,000 people annually and injecting \$20 million into the local economy. These events include Australia Day, Maitland Taste, Burton Automotive Hunter Valley Steamfest, Maitland Aroma Coffee & Chocolate Festival, Riverlights Multicultural Festival, Bitter & Twisted Boutique Beer Festival and New Year's Eve events.

For more information on city flagship events visit mait.city/FlagshipEvents

RIVERLIGHTS MULTICULTURAL FESTIVAL

Riverlights Multicultural Festival celebrates Maitland's cultural diversity through food, music, dance and interactive experience.

See The Levee Central Maitland transform into a global village with different nations represented each year where visitors can see, taste, feel and experience different cultures.

This annual event is a free community event not to be missed.

To find out more information about Riverlights Multicultural Festival visit maitlandriverlights.com.au





Connect With Your Community

Our Vibrant City

Maitland is a vibrant community with facilities and services for all, from babies and youth to seniors. Maitland is the place to be, whether you are looking to connect with like minded residents, look after your health and wellbeing, pursue learning opportunities, practice your faith, pursue a passion or support the community.

Maitland has 4 libraries, 13 community halls, 3 men's sheds, 25+ places of worship, 5 bowling clubs, 100+ sporting clubs and 50+ arts, culture and recreation groups.

For more information visit mait.city/OurVibrantCommunity



Arts and Culture

Maitland City Council has strong connections and commitment to creative and cultural endeavours. Activations are coming to life across the city and transforming mundane underused areas into visual and creative spaces. After Dark and Street Eats activities bring neighbourhoods together, enlivening our streets and build upon strengthening community connections. To find out when these activities are on visit mait.city/StreetEatsGetTogether

Maitland Regional Art Gallery (MRAG) is a dynamic art gallery serving the community, region and visitors to Maitland, with 80,000+ people visiting each year. The Gallery presents award winning exhibitions, with new exhibitions every three months sure to delight and excite. MRAG also hosts an engaging and varied program of workshops, learning and arts health activities, performances and talks each month which connect audiences with art, artists and ideas, including the weekly Free Art Sunday workshop for children and families and Art & Dementia program twice per month. Visitors can also arrange a tour, purchase artisan items in the Gallery Shop, enjoy the hospitality of the onsite café, or explore the diverse and vibrant Collection online featuring over 7000 works by Australian and international artists. Entry is free, with drop in experiences for kids available every day.

For more information and to see what's on, visit mrag.org.au

Maitland Gaol is a premier heritage listed site attracting visitors from all over the world. With a vibrant history spanning more than 150 years, this former maximum security prison is now open for you to explore.

For more information visit maitlandgaol.com.au

Health and Wellbeing

Maitland has a broad range of quality medical and allied services and facilities.

Maitland has both a private hospital and a public hospital, with a 24 hour emergency department. For more information on these hospitals visit maitlandprivatehospital.com.au and hnehealth.nsw.gov.au/facilities/hospitals/maitland-hospital

Maitland also offers a GP Access After Hours service and East Maitland Community Health Centre. Our hospitals are complemented by 58 general practices and over 110 health and medical specialists across the city, some of which are pathologists, physiotherapists, speech pathologists, occupational therapists, dentists, podiatrists, optometrists and mental health professionals. The Maitland area also has a range of pharmacies, some of which operate extended hours and weekends and some of them offer delivery to your door.

For alternative health therapies, Maitland features an array of wellness centres that offer dry needling and acupuncture, amongst other services. There are also plenty of other alternative specialists and service providers across Maitland including naturopathy, massage, reiki and meditation.

Search for a GP, dentist, optometrist or a range of other specialists near you through Health Engine, which is Australia's leading website for finding and booking health practitioners in your local area. Visit healthengine.com.au or call 1300 377 639.





Volunteer and Make a Difference

Volunteers are an extremely important part of the community. There are a number of volunteering opportunities available with a variety of different community organisations across the city. There's an opportunity to suit every skill level, interest area and schedule from supporting the aged and disabled, to assisting in coordinating major events in the community.

Examples of organisations in the region to volunteer for are the Maitland Neighbourhood Centre, Maitland Regional Art Gallery, Hunter Volunteer Centre, Maitland City Library and Mai-Wel which is one of the largest disability services providers in the Lower Hunter Region. There is also the Maitland Events team, responsible for delivering flagship events for the city each year. More information about volunteering can be found by visiting mait.city/Volunteer

Get Involved Locally

Maitland's people are an important part of what makes the city such a desirable place to live.

There are community, sporting, multicultural and special interest groups catering to a wide range of people ready to welcome you. Residents are keen to get out and about, supporting vibrant arts and cultural scenes, a diverse calendar of events and a range of fundraising opportunities.

Whether you are here for a visit, a short time or a lifetime, the one thing you can be sure of is that you're always welcome in Maitland. To find out more information visit mait.city/CommunityConnections or to access the Community Notices visit mait.city/CommunityNotices

Become a Citizen

CITIZENSHIP CEREMONIES

Maitland City Council conducts Citizenship Ceremonies throughout the year.

Citizenship candidates will receive an invitation advising of the date and the venue for their Citizenship Ceremony once it's been approved by the Department of Home Affairs. Citizenship Ceremonies are usually held in the Council Chamber at Maitland Town Hall and are also conducted as part of the Australia Day event in Maitland Park on 26 January and at **Maitland Riverlights Multicultural Festival** in October.

For all information and enquiries related to Australian Citizenship please call the Department of Home Affairs on 13 18 81 or visit **immi.homeaffairs.gov.au**

For any enquiries once you have received your invitation, or for general enquiries about citizenship ceremonies conducted by the Council, contact the Office of the General Manager via **executive@maitland.nsw.gov.au**





Waste and Recycling

Collection Services

There are a few different collection services available for Maitland LGA residents. Visit [mait.city/WasteRecycling](https://maitlandcity.nsw.gov.au/mait.city/WasteRecycling) for full details.

The following information details Maitland City Council's waste collection and recycling services, along with some helpful resources and tips so that we can all do our part for the environment and future generations.

More information about disposing of problem waste can be found by visiting [mait.city/WasteDisposal](https://maitlandcity.nsw.gov.au/mait.city/WasteDisposal)

Your Kerbside Bin

All households that pay the domestic waste service charge on their rates have three bins, including a red or dark green lid bin for garbage, yellow lid recycling bin and a lime green lid garden organics bin.

Assisted Waste Collection Service is available for residents who cannot physically move their bins from their property to the kerbside and back for collection every week due to a medical condition, disability or age. Before applying check if a neighbour, friend or family member is willing to help and review the terms and conditions at [mait.city/AssistedWasteConditions](https://maitlandcity.nsw.gov.au/mait.city/AssistedWasteConditions). To be eligible upload a completed Assisted Waste Collection Service Application Form and a Doctor's Certificate to [mait.city/AssistedWasteCollection](https://maitlandcity.nsw.gov.au/mait.city/AssistedWasteCollection). Once your application has been received, the Council will contact you within 10 days to organise an inspection of your property. If you have trouble completing your application form, contact our Customer Experience Team on 02 4934 9700.

More information about kerbside bins and collection days can be found by visiting [mait.city/KerbsideBinCollection](https://maitlandcity.nsw.gov.au/mait.city/KerbsideBinCollection)





Putting Your Bins Out

When putting your bins out, the following bin etiquette is important and several factors must be followed. This includes:

- Placing your bin on the kerbside before 5.00am on your collection day.
- Ensure your bin is not obstructed by vehicles, overhanging trees, electricity poles or letter boxes.
- Place your bin with the lid opening towards the roadway.
- Make sure the lid of your bin is fully closed.
- Find out what can be placed in your bins. Bins may be rejected if they contain unacceptable material.
- Ensure your bin weighs less than 80kg.
- Space bins a minimum of one metre apart.

Mount Vincent Road Waste Management Centre

WASTE VOUCHERS

Every July the council sends out a waste voucher to residents that are paying the domestic waste management charge, which they are able to use to dispose domestic waste at the Mount Vincent Road Waste Management Centre. Certain conditions apply which are outlined on the Council's website.

The Mount Vincent Road Waste Management Centre is located at 109 Mount Vincent Road, East Maitland NSW. Operating hours are every day from 8.15am to 4.00pm. More information can be found by visiting mait.city/WasteManagementCentre

The Council has included Remondis Australia Pty Ltd on the Service Provider list for Bulky Waste Collection Services. Remondis will collect a fee directly from the resident requesting the service for the removal of the bulky waste. For more information visit mait.city/BulkyWasteCollection



Animals and Pets

Registering Your Pet

Dog and cat owners must register and microchip their dogs and cats. This is important in ensuring that they can be easily identified and returned if they are lost, stolen, or injured. It is required that you get an annual permit (as well as the lifetime pet registration) if you own a dog of a restricted breed or declared to be dangerous or you own a cat that has not been de-sexed by four months of age.

Register your pets on the NSW Pet Registry via petregistry.nsw.gov.au. You will need to have your driver's licence, passport or Medicare card handy to create your pet registration. Information on registration costs can also be found by visiting mait.city/MicrochippingAndRegistration

It's only a simple two step process to microchip and register your pets.

By creating a profile on the NSW Pet Registry, you will be able to:

- Update your contact details such as a change of address.
- Report your pet as missing or deceased.
- Transfer ownership of your pet.
- Pay most lifetime registration fees online.

Cats and dogs must be microchipped by the time they are 12 weeks old. Pet microchip records can only be created by a vet, an authorised implanter, or a Council. Once your pet has been microchipped, its details will be stored in the NSW Companion Animal Register, and you will be issued with a certificate, which you should keep for future reference.

For more information on animal microchipping and registration visit mait.city/Pets

Rates

Revenue from rates helps fund the services we provide to you.

Rates are levied on a financial year cycle and can be paid in full by the 31 August or you can elect to pay the total amount by four quarterly instalments due on 31 August, 30 November, 28 February and 31 May each year.

For more information about rates visit [**mait.city/RatesFAQS**](http://mait.city/RatesFAQS) or to arrange to receive your rates electronically and change your delivery preference to email visit [**mait.city/RatesEmailed**](http://mait.city/RatesEmailed)

How to Pay Your Rates

You can pay your rates in a variety of ways:

- Pay online via [**mait.city/PayRatesOnline**](http://mait.city/PayRatesOnline)
- By direct debit – complete and return the Direct Debit Form which can be downloaded at [**mait.city/PayingYourRates**](http://mait.city/PayingYourRates)
- BPAY online through Net Banking
- By phone 02 4934 9700
- In person at any Australia Post Office
- Cheque via mail – PO Box 220, Maitland NSW 2320

For more information contact Council on 02 4934 9700 or visit [**mait.city/PayingYourRates**](http://mait.city/PayingYourRates)



Multicultural Community Services

NORTHERN SETTLEMENT SERVICES (NSS)

Northern Settlement Services Ltd (NSS) is an entirely independent not for profit organisation to assist migrants and refugees in their settlement into Australian life. NSS also provides a range of services for aged care, youth, and vulnerable families across the Hunter, Central Coast and New England regions of NSW.

Phone: 02 4969 3399

Email: nss@nsservices.com.au

HUNTER MULTICULTURAL COMMUNITIES

Hunter Multicultural Communities Inc. (HMC) is a non-profit public benevolent organisation providing social support and community programs for seniors, people with disabilities and their carers from culturally and linguistically diverse (CALD) backgrounds.

Phone: 02 4960 8248

Email: office@huntermulticultural.org.au

MULTICULTURAL DISABILITY ADVOCACY ASSOCIATION OF NSW (MDAA), NEWCASTLE

The Multicultural Disability Advocacy Association NSW (MDAA) provides individual advocacy services for infants, children, the aged and young people with disabilities and are from non-English speaking backgrounds.

Phone: 02 9891 6400

Email: newcastle@mdaa.org.au

CATHOLICCARE SOCIAL SERVICES HUNTER – MANNING – REFUGEE HUB

CatholicCare's Refugee Hub, support people from refugee, asylum seeker, and vulnerable migrant backgrounds to settle into life in Australia by providing a range of practical programs that promote inclusion, wellbeing, confidence, and skills development.

Phone: 02 4015 2800

Email: ccenquiries@catholiccare.org.au

LIFE WITHOUT BARRIERS

Life Without Barriers supports refugees and asylum seekers who are living in the Australian community, while their immigration status is resolved.

Phone: 02 4035 8100

Email: info@lwb.org.au



MULTICULTURAL NEIGHBOURHOOD CENTRE, NEWCASTLE

The Multicultural Neighbourhood Centre (MNC) is a not for profit Government funded Neighbourhood Centre which specifically caters for the needs of non-English speaking background people of all ages.

Phone: 02 4965 5291

Email: info@mncinc.org.au

HUNTER NEW ENGLAND LHD: MULTICULTURAL HEALTH SERVICE, NEWCASTLE

The Multicultural Health Service supports clinicians to provide equitable and accessible public health care to culturally and linguistically diverse (CALD) patients and people with hearing impairments.

Phone: 02 4924 6643

Email: HNELHD-MulticulturalHealth@health.nsw.gov.au

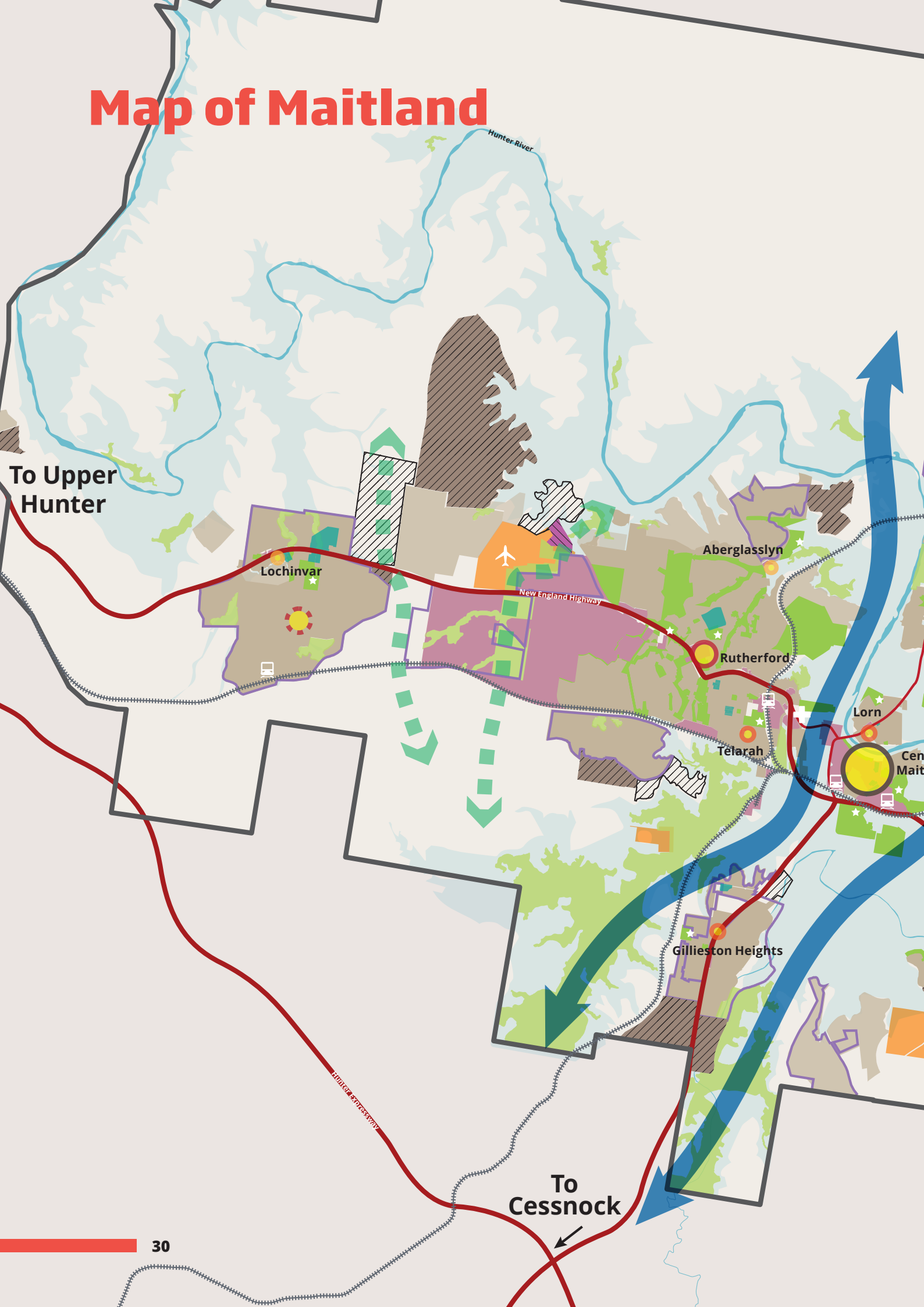
Who To Contact?

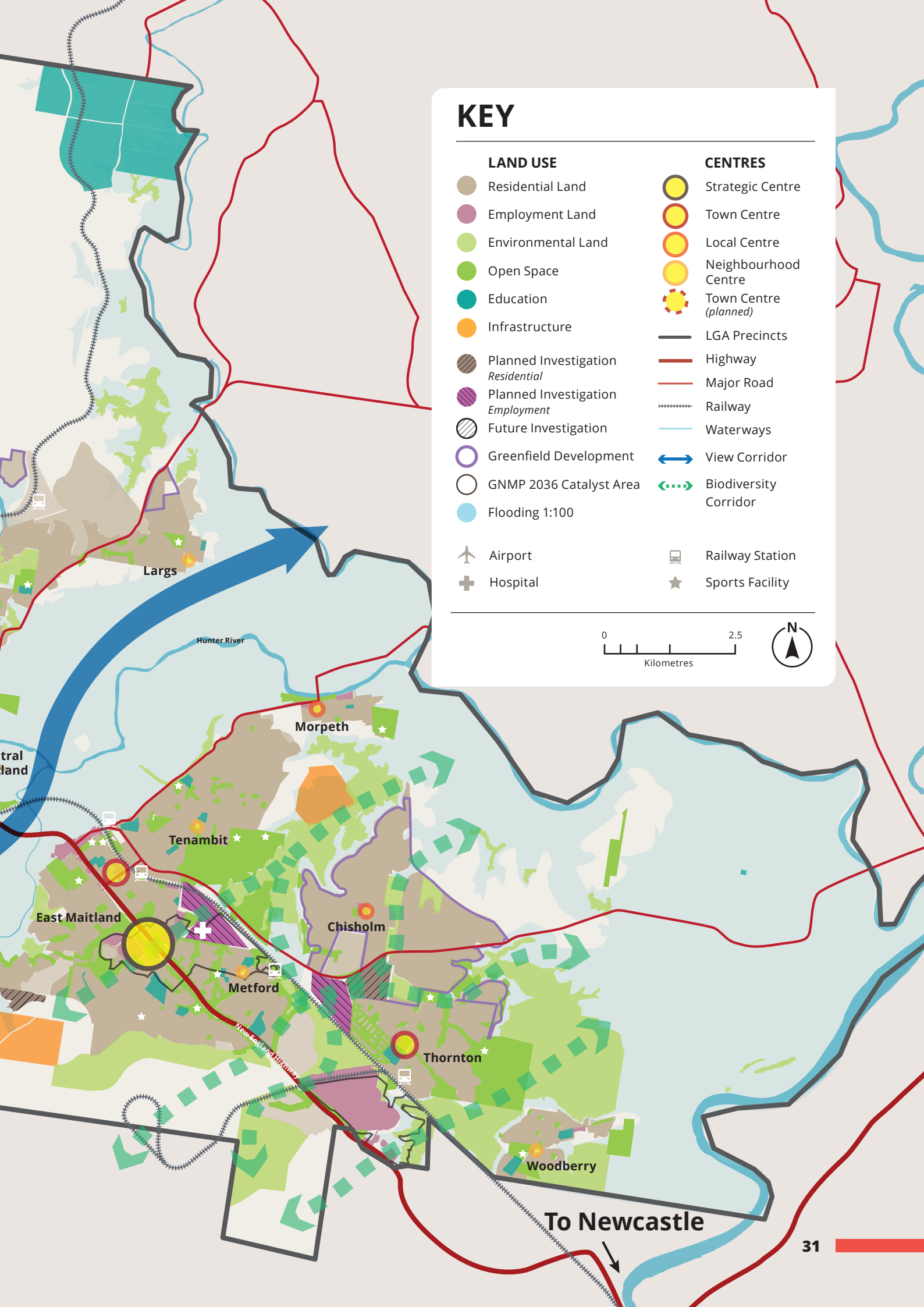
In addition to the wide range of services Maitland City Council provides to the local community, you may also be interested to know who you should contact for various essential services.

Animal pound	Maitland Animal Management Facility	0438 742 541
Asbestos information	NSW Environmental Protection Authority (EPA)	131 555
Bee swarms and nests on private property	Contact a local bee collector for removal	Yellow Pages Directory yellowpages.com.au
Bus services	Hunter Valley Buses	02 4935 7200
Bushfire information	Rural Fire Service (RFS) Bushfire Information Line	1800 679 737
Emergency services	Emergency Services	000 or (TTY106)
	SES Emergencies	13 25 000
European wasp information	Department of Primary Industries (NSW)	Contact a pest controller or if they are a pest in a public space contact local council dpi.nsw.gov.au/biosecurity/plant/bees-and-wasps/european-wasp
Hospitals/Community Health	GP Access After Hours	1300 130 147
	Maitland Public Hospital	02 4087 1000
	Maitland Private Hospital	02 1933 8400
	East Maitland Community Health Centre	02 4931 2000
Information about underground services	Dial before you Dig	1100.com.au/contact
Injured wildlife	Wildlife Information Rescue Service and Education (WIRES)	1300 094 737
	Hunter Wildlife Rescue	0418 628 483 or 0418 NATIVE (24-hour Emergency Rescue Hotline)
Littering	NSW Environmental Protection Authority (EPA)	131 555 or report online at ridonline.epa.nsw.gov.au

Multicultural resources	Multicultural NSW Settlement Portal	02 8255 6767 multicultural.nsw.gov.au/new-arrivals-to-nsw
Pollution/smokey vehicles	NSW Environmental Protection Authority (EPA)	131 555
Power supply faults	Ausgrid	13 13 88 (emergencies) 13 13 65 (general enquires)
Public transport information and complaints	Transport NSW	131 500 or (02) 8202 2200 transport.nsw.gov.au
Rubbish dumped in parks	NSW Environmental Protection Authority (EPA)	131 555
Snakes in domestic properties	Gary Bear	0421 911 940
	Justin Lantry	0408 301 544
Taxi services	Maitland Taxi	02 4933 7333 or 131 008
	Diggers Maitland Taxi	02 4032 7999
Telephone, internet and NBN enquires	Contact your own service provider (e.g. Telstra/Optus)	
Traffic hazards/maintenance on highways and main roads	Transport for NSW	02 8202 2200
Train and coach service	Rover Coaches	02 4990 1699
	NSW TrainLink	13 22 32
Translation and interpreting	Translating and Interpreting Service (TIS)	131 450 tisinational.gov.au
Water supply and sewage services	Hunter Water	1300 657 000 (for moderate or major leak)

Map of Maitland





KEY

LAND USE

- Residential Land
- Employment Land
- Environmental Land
- Open Space
- Education
- Infrastructure
- Planned Investigation Residential
- Planned Investigation Employment
- Future Investigation
- Greenfield Development
- GNMP 2036 Catalyst Area
- Flooding 1:100

CENTRES

- Strategic Centre
- Town Centre
- Local Centre
- Neighbourhood Centre
- Town Centre (planned)
- LGA Precincts
- Highway
- Major Road
- Railway
- Waterways
- View Corridor
- Biodiversity Corridor

- Airport
- Hospital
- Railway Station
- Sports Facility





maitland
city council

285 - 287 High Street
Maitland NSW 2320

t 02 4934 9700

info@maitland.nsw.gov.au
maitland.nsw.gov.au